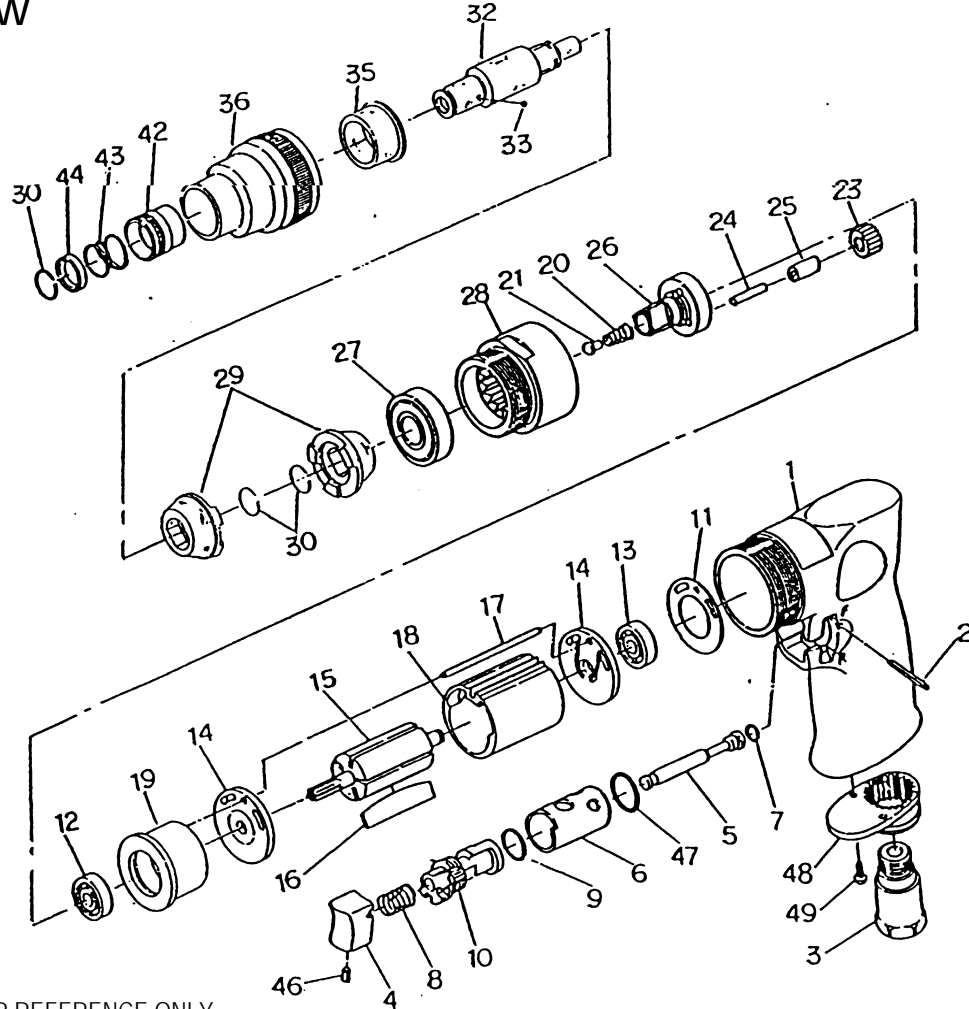


2015 POSITIVE CLUTCH SCREWDRIVER

EXPLODED VIEW



PARTS LIST – FOR REFERENCE ONLY

Index Number	Part Number	Description	Qty.	Index Number	Part Number	Description	Qty.	Index Number	Part Number	Description	Qty.
1	80401	HOUSING	1	15	80415	ROTOR	5	29	80429	DRIVE DOG	2
2	80402	PIN	1	16	80416	ROTOR BLADE	1*	30	80430	RETAINING RING	3*
3	80403	AIR INLET	1	17	80417	PIN	1	32	80432	CAM SPINDLE	1
4	80404	TRIGGER	1	18	80418	CYLINDER	1	33	80433	STEEL BALL	1
5	80405	VALVE STEM	1	19	80419	FRONT PLATE	1	35	80435	CLUTCH BUSHING	1
6	80406	REVERSE BUSHING	1	20	80420	SPRING	1*	36	80436	CLUTCH HOUSING	1
7	80407	O RING	1*	21	80421	SPRING GUIDE	1	42	80442	BALL RETAINER	1
8	80408	VALVE SPRING	1*	23	80423	PLANET GEAR	3	43	80443	SPRING	1*
9	80409	O RING	1*	24	80224	PIN	3	44	80444	WASHER	1
10	80410	REVERSE LEVER	1	25	80225	SPACER	3	46	80446	SET SCREW	1
11	80411	MOTOR GASKET	1*	26	80426	WORK SPINDLE	1	47	80447	O RING	1*
12	BR 626ZZ	BALL BEARING	1	27	80427	BALL BEARING	1	48	80448	EXHAUST DIFFUSER	1
13	BR 626ZZ	BALL BEARING	2	28	80428	CLAMP NUT	1	49	80449	SCREW	2
14	80414	END PLATE	1								

TECHNICAL DATA

	Max Air Pressure	Recommended Air Hose Size	RPM Free Speed	Max Air Flow CFM	Weight (lbs.)
2015	90 psi	3/8"	1,800	16	2.6

FOOTNOTES

* Parts Available in Repair Kit 2015-RK*



When ordering spare parts, please specify tool type, part number and description

10000 SE PINE, PORTLAND, OR 97216
503-254-1749 FAX 503-256-4026

REVISED 7/99