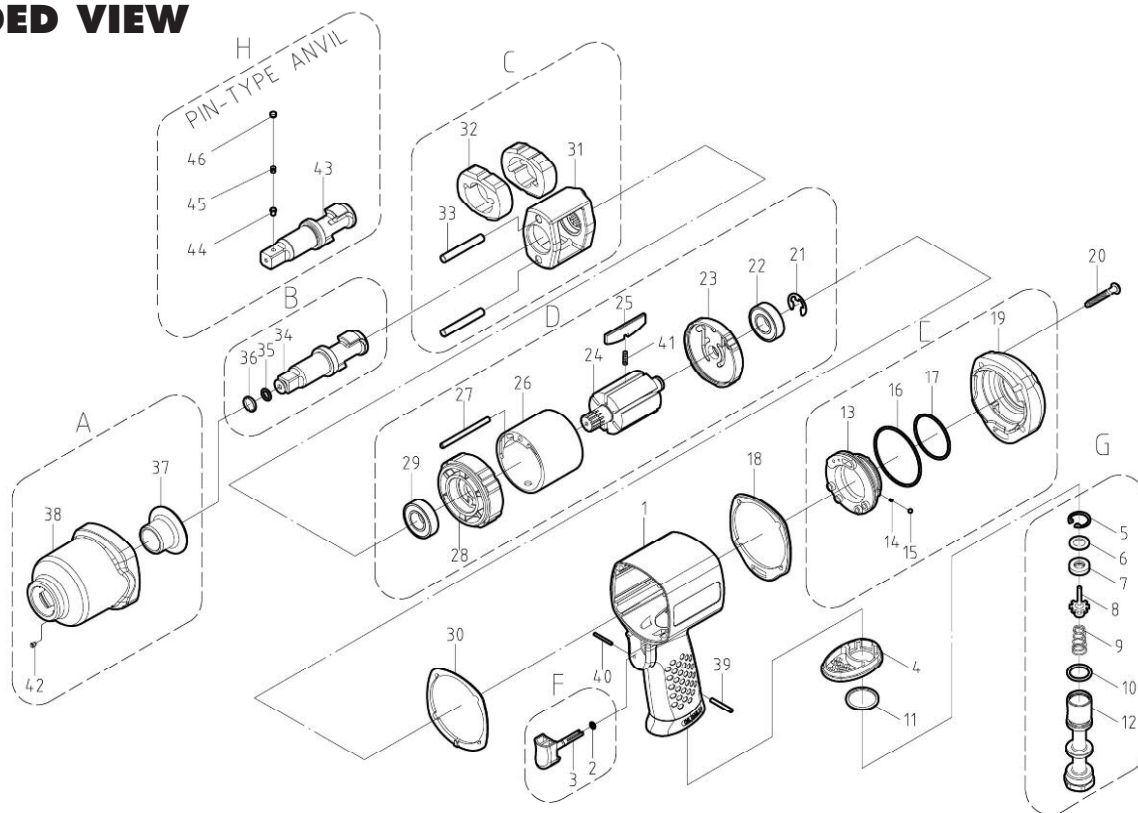


2240/2240PEC 1/2" IMPACT WRENCH

EXPLODED VIEW



PARTS LIST — FOR REFERENCE ONLY

Index Number	Part Number	Description	Qty	Index Number	Part Number	Description	Qty.
1	2240-1	Housing	1	25	2240-25	Blade	7
2	2240-2	O-Ring	1	26	2240-26	Cylinder	1
3	2240-3	Trigger	1	27	2240-27	Spring Pin	1
4	2240-4	Exhaust Deflector	1	28	2240-28	Front Plate	1
5	2240-5	Retaining Ring	1	29	982-142-0	Ball Bearing	1
6	2240-6	Washer	1	30	2240-30	Packing	1
7	2240-7	Oil Seal	1	31	2240-31	Hammer Cage	1
8	2240-8	Pin Valve Rod	1	32	2240-32	Hammer	2
9	2240-9	Cone Spring	1	33	2240-33	Hammer Pin	2
10	2240-10	O-Ring	1	34	2240-34	Anvil	1
11	2240-11	Washer	1	35	2240-35	O-Ring	1
12	2240-12	Air Inlet	1	36	2240-36	Anvil Collar	1
13	2240-13	Reverse Lever	1	37	2240-37	Bushing	1
14	2240-14	Spring	1	38	2240-38	Front Casing	1
15	2240-15	Steel Ball	1	39	2240-39	Spring Pin	1
16	2240-16	O-Ring	1	40	2240-40	Spring Pin	1
17	2240-17	O-Ring	1	41	2240-41	Spring	7
18	2240-18	Packing	1	42	2240-42	Oil Drop	1
19	2240-19	Cover	1				
20	2240-20	Screw	4		PIN-TYPE ANVIL		
21	2240-21	E-Ring	1	43	2240PEC-43	Anvil	1
22	982-141-0	Ball Bearing	1	44	2240PEC-44	Lock Pin	1
23	2240-23	Rear Plate	1	45	2240PEC-45	Spring	1
24	2240-24	Rotor	1	46	2240PEC-46	Pin	1



10000 SE Pine Street
Portland, OR 97216
503-254-6600
FAX 503-255-2615

When ordering spare parts, please specify
tool type, part number and description.

FOOTNOTES