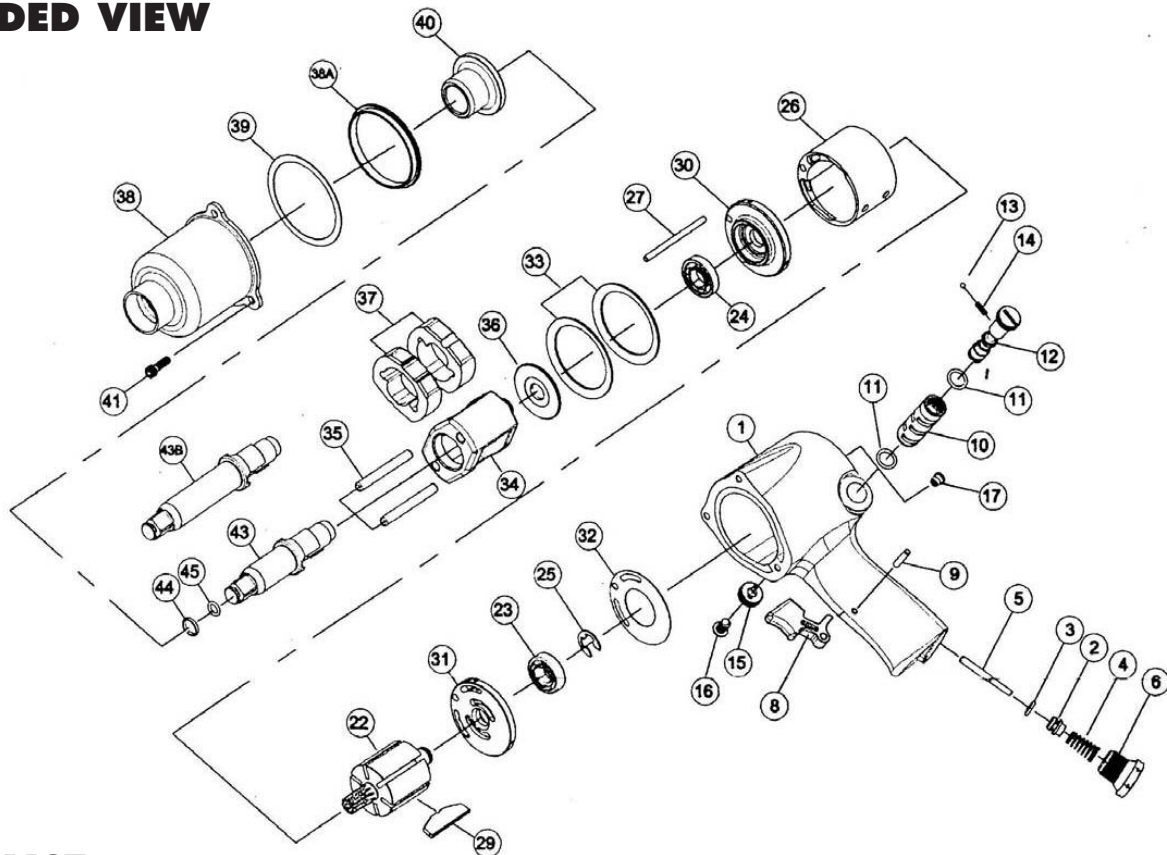


# 2256/2257 IMPACT WRENCH 1/2"

## EXPLODED VIEW



## PARTS LIST — FOR REFERENCE ONLY

Index Number	Part Number	Description	Qty
1	95074-01	Motor Housing (Inc. #10 & 17)	1
2	95074-02	Throttle Valve	1
3	95074-03	Throttle Valve Face	1
4	95074-04	Throttle Valve Spring	1
5	95074-05	Throttle Valve Stem	1
6	95074-06	Air Strainer Assembly	1
8	95074-07	Trigger	1
9	95074-08	Trigger Pin	1
10	95074-09	Reverse Valve Bushing	1
11	95074-10	Reverse Valve Bushing Seal	2
12	95074-11	Reverse Valve	1
13	95074-12	Reverse Valve Detent Seal	1
14	95074-13	Reverse Valve Detent Spring	1
15	95074-14	Reverse Valve Knob	1
16	95074-15	Reverse Valve Knob Screw	1
17	95074-16	Grease Fitting	1
22	95074-17	Rotor	1
23	95074-18	Rear Rotor Bearing	1
24	95074-19	Front Rotor Bearing	1
25	95074-20	Rear Rotor Bearing Retainer	1
26	95074-21	Cylinder	1
27	95074-22	Cylinder Dowel	1
29	95074-23	Rotor Blade	6
30	95074-24	Front End Plate	1
31	95074-25	Rear End Plate	1
32	95074-26	End Plate Gasket	1
33	95074-27	Motor Clamp Washer	2

Index Number	Part Number	Description	Qty.
34	95074-28	Hammer Frame	1
35	95074-29	Hammer Pin	2
36	95074-30	Hammer Frame Rear Washer	1
37	95074-31	Hammer	2
38	95074-32	Hammer Case	1
38A	95074-33	Hammer Case Pilot	1
39	95074-34	Hammer Case Gasket	1
40	95074-35	Hammer Case Bushing	1
41	95074-36	Hammer Case Cap Screw	3
43A	95074-37	Standard Anvil, incl. #44 & 45 (for 2256)	1
43B	95074-38	2" Extended Anvil, incl. #44 & #45 (for 2257)	1
44	95074-39	Socket Retainer	1
45	95074-40	Retainer O-Ring	1
TK Tune-Up Kit Includes: 3, 4, 11(2), 25, 29(6), 32, 39, 44, 45)			
Notes:			
1. #1 includes #10 & 17 (have to be purchased as a set)			
2. #43A includes #44 & 45			
3. #43B includes #44 & 45			

### FOOTNOTES



10000 SE Pine Street  
Portland, OR 97216  
503-254-6600  
FAX 503-255-2615

When ordering spare parts, please specify tool type, part number and description.