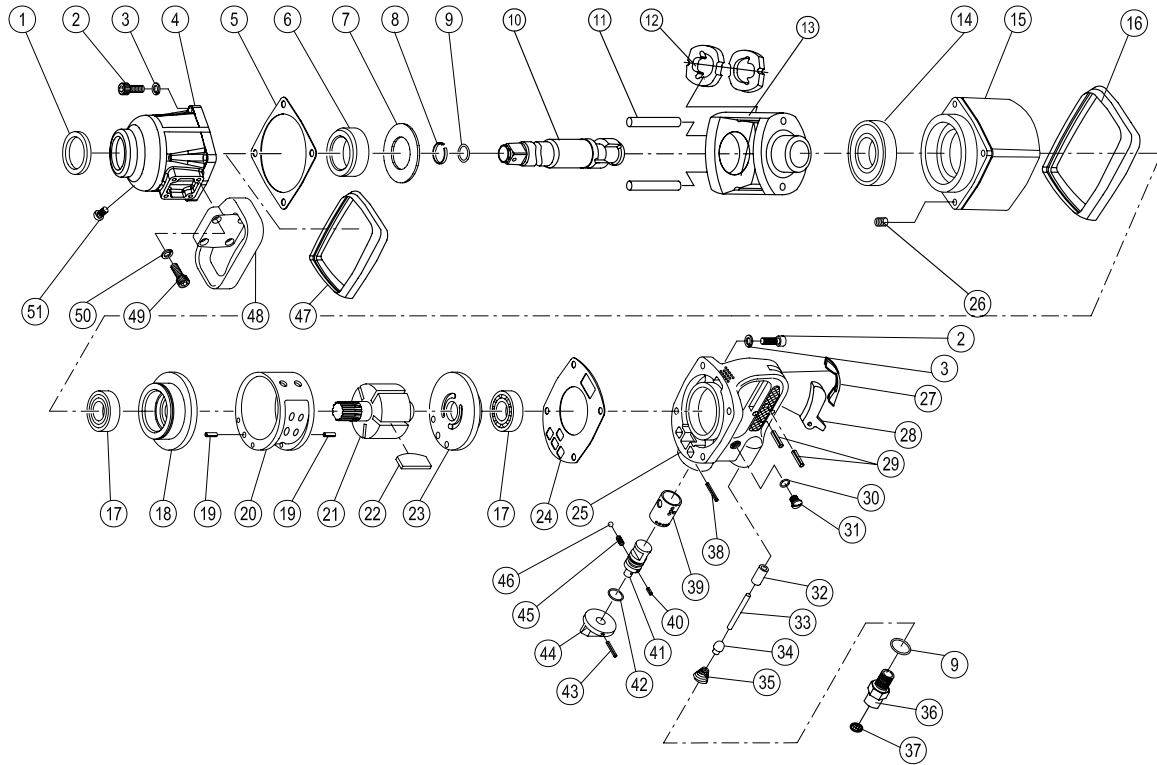


2460 TWIN HAMMER IMPACT WRENCH 1"

EXPLODED VIEW



PARTS LIST — FOR REFERENCE ONLY

Index Number	Part Number	Description	Qty	Index Number	Part Number	Description	Qty.
1	2460-1	Oil seal Ø52*38*7	1	27	2460-27	Trigger Band	1
2	2460-2	Cap Screw M8*25	8	28	2460-28	Trigger	1
3	2460-3	Spring Washer M8	8	29	2460-29	Trigger Pin Ø4*22	2
4	2460-4	Hammer Case Assembly	1	30	2460-30	O-Ring Ø18*1.5	1
5	2460-5	Hammer Case Gasket	1	31	2460-31	Bullet-headed Screw 8*8	1
6	2460-6	Hammer Case Bushing	1	32	2460-32	Throttle Valve Bushing	1
7	2460-7	Spacer	1	33	2460-33	Valve Stem	1
8	2460-8	Retainer Ring	1	34	2460-34	Air Closer	1
9	2460-9	O-Ring Ø18*2.5	1	35	2460-35	Spring	1
10	2460-10	Anvil	1	36	2460-36	Air Inlet	1
11	2460-11	Hammer Pin	2	37	2460-37	Filter Net	1
12	2460-12	Hammer	2	38	2460-38	Spring Pin Ø4*30	1
13	2460-13	Hammer Frame Assembly	1	39	2460-39	Reverse Valve Bushing	1
14	2460-14	Ball Bearing 6208	1	40	2460-40	Spring Pin Ø3*8	1
15	2460-15	Housing	1	41	2460-41	Reverse Valve	1
16	2460-16	End Band	1	42	2460-42	O-Ring Ø17*2.5	1
17	2460-17	Ball Bearing 6205	2	43	2460-43	Spring Pin Ø3*26	1
18	2460-18	Front End Plate	1	44	2460-44	Regulator Valve Knob	1
19	2460-19	Spring Pin Ø 6*18	2	45	2460-45	Spring	1
20	2460-20	Cylinder	1	46	2460-46	Steel Ball Ø4	1
21	2460-21	Rotor	1	47	2460-47	Mid Band	1
22	2460-22	Rotor Blade	6	48	2460-48	Handle	1
23	2460-23	Rear End Plate	1	49	2460-49	Cap Screw M6*20	4
24	2460-24	Handle Frame Gasket	1	50	2460-50	Spring Washer M6	4
25	2460-25	Handle Frame	1	51	2460-51	Cap Screw	1
26	2460-26	Screw Thread Jacket M8*2D	8				

FOOTNOTES



10000 SE Pine Street
Portland, OR 97216
503-254-6600
FAX 503-255-2615

When ordering spare parts, please specify
tool type, part number and description.