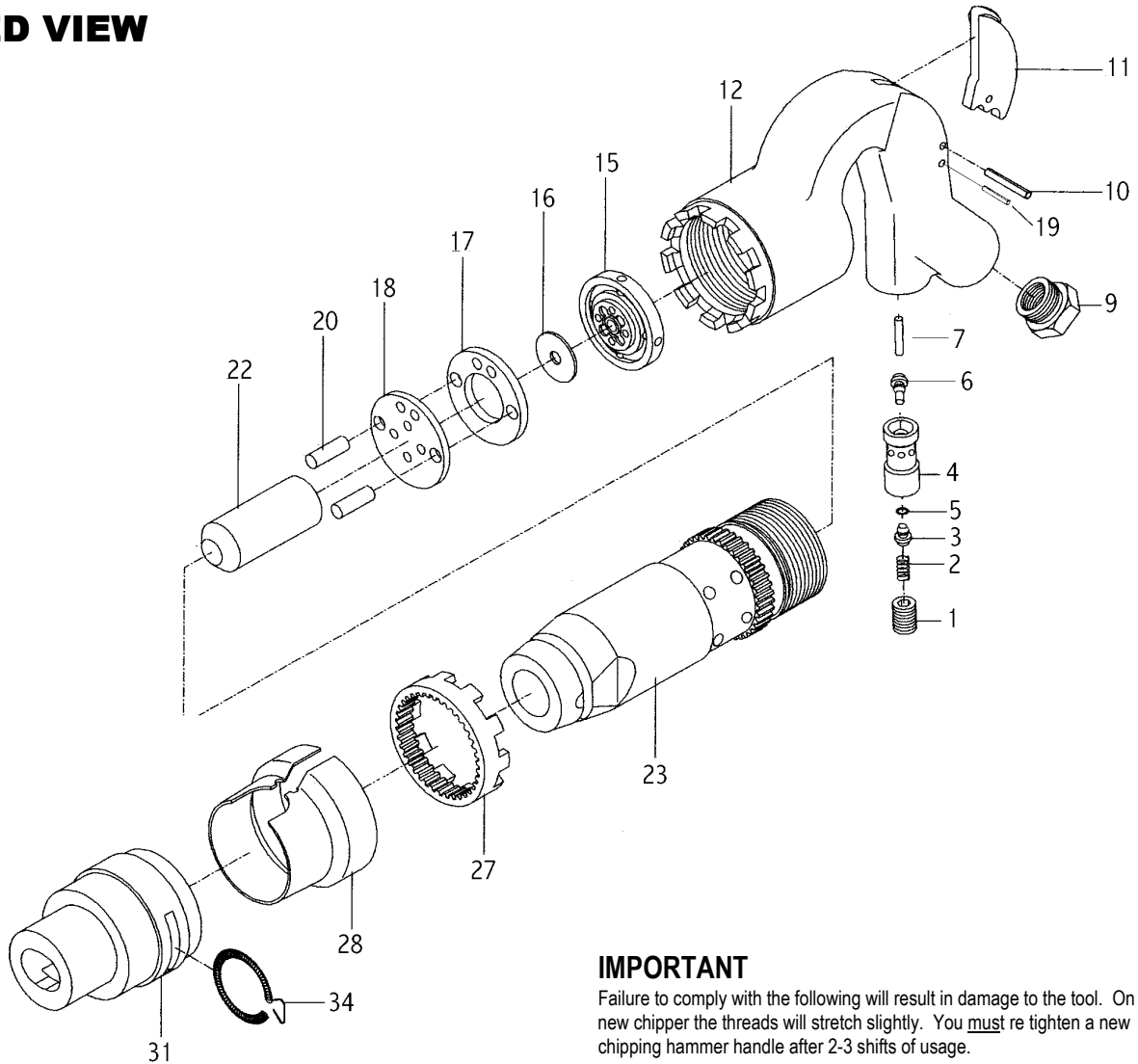


4009 2" CHIPPING HAMMER

EXPLODED VIEW



IMPORTANT

Failure to comply with the following will result in damage to the tool. On a new chipper the threads will stretch slightly. You must re tighten a new chipping hammer handle after 2-3 shifts of usage.

PARTS LIST – FOR REFERENCE ONLY

| Index Number | Part Number | Description | Qty. | Index Number | Part Number | Description | Qty. | Index Number | Part Number | Description | Qty. |
|--------------|-------------|-------------------------------|------|--------------|-------------|-------------------------------|------|--------------|-------------|------------------------------------------------------|------|
| 1 | 312-01 | Throttle Plug Valve | 1 | 11 | 312-11 | Throttle Lever | 1 | 23 | 312-23-2 | Cylinder | 1 |
| 2 | 312-02 | Throttle Spring Valve | 1* | 12 | 312-12 | Handle (Included No. 4, 7, 9) | 1 | 27 | 312-27 | Lock | 1 |
| 3 | 312-03 | Throttle Valve (Included # 5) | 1* | 15 | 312-15 | Upper Valve Case Lid | 1 | 28 | 312-28 | Lock Shield | 1 |
| 4 | 312-04 | Throttle Bushing Valve | 1 | 16 | 312-16 | Valve | 1 | 31 | 312-31 | Retainer Sleeve | 1 |
| 5 | 312-05 | O-Ring | 1* | 17 | 312-17 | Valve Case | 1 | 34 | 312-34 | Lock-coil Spring | 1 |
| 6 | 312-06 | Push Pin | 1* | 18 | 312-18 | Lower Valve Case Lid | 1 | 35 | 312-35 | Cylinder Bushing | 1 |
| 7 | 312-07 | Bushing Push Pin | 1 | 19 | 312-19 | Stop Pin | 1 | 35 | 312-35H | Hex Bushing (Optional) | 1 |
| 9 | 312-08 | Permanent Bushing | 1 | 20 | 312-20 | Dowel Pin | 2* | | 312A-12A | Handle Assy. (Included #1,2,3,4,5,6,7,9,10,11,12,19) | 1 |
| 10 | 312-10 | Throttle Pin Lever | 1 | 22 | 312-22-2 | Piston | 1 | | | | |

TECHNICAL DATA

| | Max Air Pressure | Recommended Air Hose Size | BPM Free Speed | Max Air Flow CFM | Weight (lbs.) |
|------|------------------|---------------------------|----------------|------------------|---------------|
| 4009 | 90 psi | 3/8" | 1,900 | 30 | 16 |

FOOTNOTES

* Parts Availabl in Repair Kit 4009-RK*

EAGLE

10000 SE Pine Street
Portland, OR 97216
503-254-6600
FAX 503-255-2615

When ordering spare parts, please specify tool type, part number and description.

REVISED 7/99