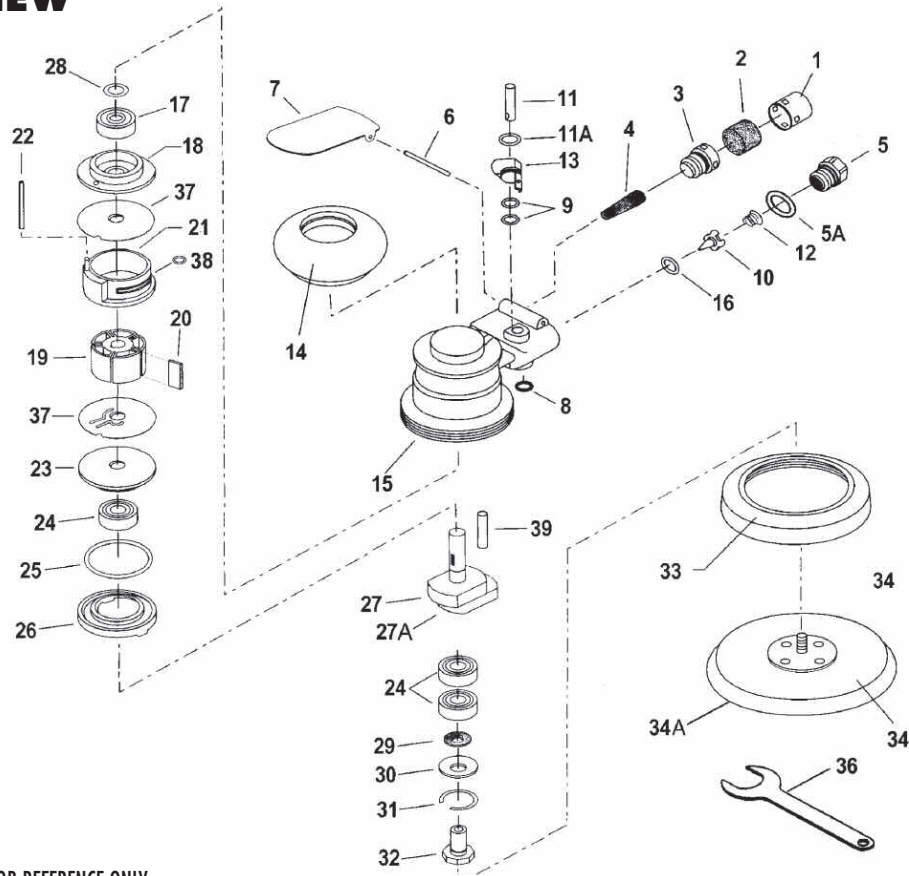


# 6905EC/6905VEC/6906EC RANDOM ORBITAL SANDER

## EXPLODED VIEW



## PARTS LIST — FOR REFERENCE ONLY

Index Number	Part Number	Description	Qty.	Index Number	Part Number	Description	Qty.
1	7181001	Cover	1	20	7181020	Rotor Blade	5*
2	7181002	Felt	1	21	7181021	Cylinder	1
3	7181003	Muffer Body	1	22	7181022	Spring Pin	1
4	7181004	Cone Muffer	1	23	7181023	Front Plate	1
5	7181005	Inlet Bushing	1	24	7181024	Ball Bearing	3*
5A	7181005A	Washer	1	25	7181025	O-Ring	1
6	7181006	Spring Pin	1	26	7181026	Safeguard Busing	1
7	7181007	Lever	1	27	7181027	Motor Shaft Balancer - 2.5mm	1
8	7181008	Snap Ring	1	27A	7181027A	Motor Shaft Balancer - 5mm (option)	1
9	7181009	O-Ring	2	28	7181028	Snap Ring	1
10	7181010A	Regulator	1	29	7181029	Felt Ring	1
11	7181011	Valve Stem	1	30	7181030	Bearing Shield	1
11A	7181011A	O-Ring	1	31	7181031	Snap Ring	1
12	7181012	Spring	1	32	7181032	Shaft	1
13	7181013	Lever	1	33	7181033	Shroud	1
14	7181014	Rubber Cover	1	34	7181034	5" Pad	1
15	7181015	Housing	1	35	7181035	Vacuum Adapter	1
16	7181016	Washer	1	36	7181036	Wrench	1
17	7181017	Ball Bearing	1	37	7181037	Steel Plate	2
18	7181018	Rear Plate	1	38	7181038	O-Ring	1
19	7181019	Rotor	1	39	7181039	Pin	1

### TECHNICAL DATA

	Recommended Air Pressure	Air Hose Size	Free Speed RPM
MA-5 & MA-6	90 psi	3/8"	12,000

### ACCESSORIES

34	71810034	5" Sanding Pad	1
34A	71810034A	6" Sanding Pad	1

### FOOTNOTES

\* Parts Available in 6900-RK \*

# EAGLE

10000 SE Pine Street  
Portland, OR 97216  
503-254-6600  
FAX 503-255-2615

When ordering spare parts, please specify tool type, part number and description.