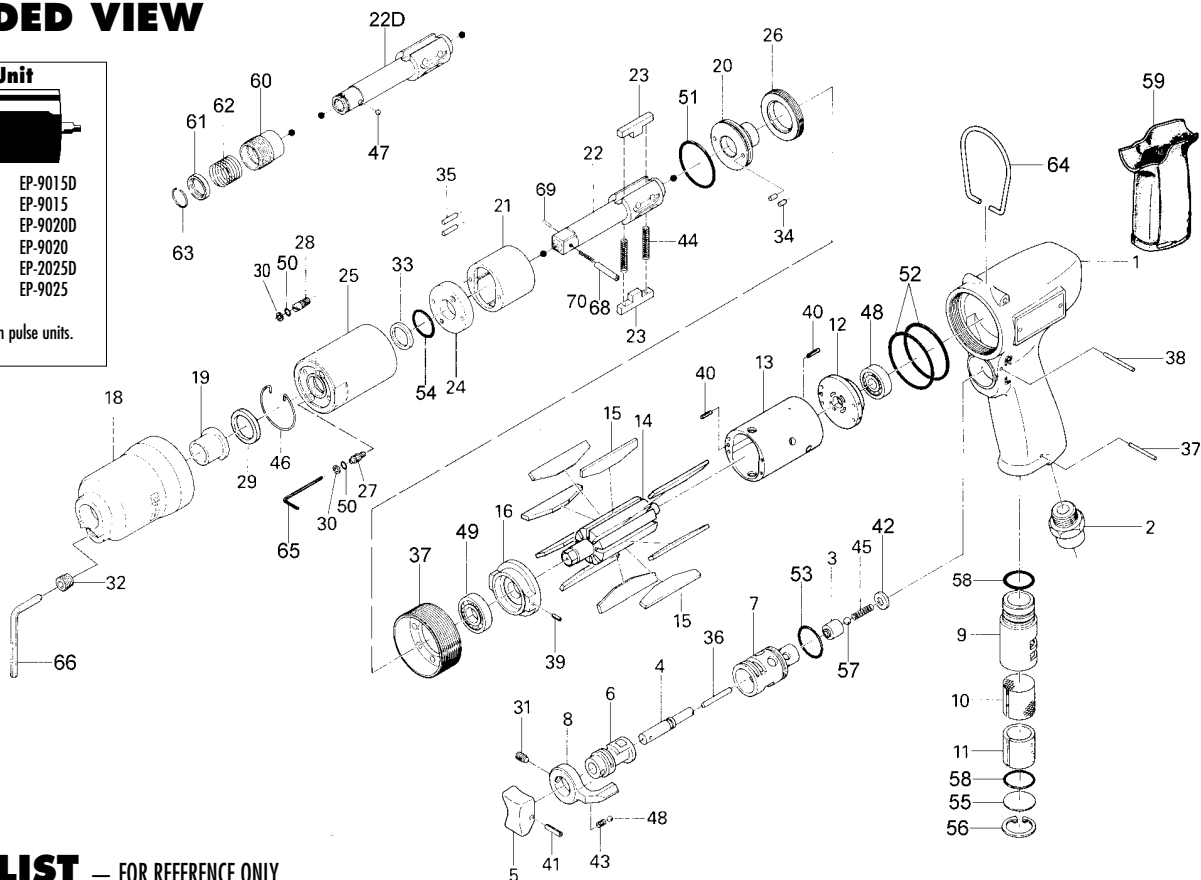
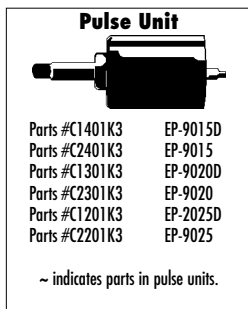


9015(D), 9020(D), 9025(D) PULSE TOOLS

EXPLODED VIEW



PARTS LIST — FOR REFERENCE ONLY

Index Number	Part Number	Description	Qty.	
1	C120100100	Housing	1	▲,◆
1	C130100100	Housing	1	●,○
1	C140100100	Housing	1	■,□
2	C120100200	Air Inlet Bushing	1	
3	C120100300	Valve	1	
4	C120100400	Valve Rod Bushing	1	
5	C120100500	Trigger	1	
6	C120100600	Reverse Valve	1	
7	C120100700	Reverse Valve Bushing	1	
8	C120100800	Reverse Lever	1	
9	C120100900	Exhaust Stack	1	
10	C120101000	Silencer	1	
11	C120101100*	Filter	1	
12	C120101200	Rear Plate	1	●,○,▲,◆
12	C140101200	Rear Plate	1	■,□
13	C120101300	Cylinder	1	▲,◆
13	C130101300	Cylinder	1	●,○
13	C140101300	Cylinder	1	■,□
14	C120101400	Rotor	1	▲,◆
14	C130101400	Rotor	1	●,○
14	C140101400	Rotor	1	■,□
15	C120101500*	Blade	9	▲,◆
15	C130101500*	Blade	9	●,○
15	C140101500*	Blade	9	■,□
16	C120101600	Front Plate	1	●,○,▲,◆
16	C140101600	Front Plate	1	■,□
17	C120101700	Hammer Casing Connector	1	
18	C120101800	Front Casing	1	▲,◆
18	C130101800	Front Casing	1	■,□,●,○
19	C120101900	Anvil Bushing	1	
20~	C120102000	Rear Liner Plate	1	
21~	C120102100	Liner	1	▲,◆
21~	C130102100	Liner	1	■,□,●,○

Index Number	Part Number	Description	Qty.	
22~	C120102200	Anvil 1/4" QC	1	◆
22~	C130102200	Anvil 1/4" QC	1	□,○
22~	C220102200	Anvil (3/8" SQ Drive)	1	▲
22~	C230102200	Anvil (3/8" SQ Drive)	1	■,●
23~	C120102300	Anvil Blade	2	▲,◆
23~	C130102300	Anvil Blade	2	■,□,●,○
24~	C120102400	Front Liner Plate	1	
25~	C120102500	Liner Casing	1	▲,◆
25~	C130102500	Liner Casing	1	■,□,●,○
26~	C120102600	Liner Casing Setter	1	
27~	C120102700	Relief Valve Spindle	1	
28~	C120102800	Oil Plug	1	
29	C120102900	Anvil Front Spacer	1	
30~	C120103000**	Supporting Ring (2.6 x 4.5 x 1)2	1	
31	C120103100	Allen Head Dog Point Screw	1	
32	8045000000	Allen Head Plug (NPT 1/16)	1	
33~	C120103300**	Supporting Ring	1	
34~	C120103400	Pin (H) (2.45 x 4.5)	2	
35~	C120103500	Pin (H) (2.45 x 11)	2	
36	C120103600	Pin (GI) (2 x 12)	1	
37	C120103700	Pin (2.5 x 22)	1	
38	C120103800	Pin (2 x 22)	1	
39	1410000000	Roll Pin (2 x 6)	1	
40	C120104000	Roll Pin (2X8)	2	●,○,▲,◆
40	C140104000	Roll Pin (1.75X6)	2	■,□
41	C120104100	Roll Pin (2 x 14)	1	
42	C120104200	Valve Cover	1	
43	C120104300	Spring (3 x 5)	1	
44~	C120104400**	Spring (3.5 x 21) WPC	2	
45	C120104500	Spring (3.2 x 13)	1	
46~	C120104600	Snap Ring	1	
47	0420000000	Ball (1/8)	1	
48	C120104800*	Ball Bearing (EE-2)	1	

Index Number	Part Number	Description	Qty.	
49	C120104900*	Ball Bearing (EE-3)	1	
50~	C120105000**	O-Ring (1.42 x 1.53)	2	
51~	C120105100**	O-Ring (20.35 x 1.78)	1	
52	C120105200*	O-Ring (33.05 x 1.78)	2	●,○,▲,◆
52	C140105200	O-Ring (33.05 x 1.78)	2	■,□
53	C120105300	O-Ring (13 x 1.5)	1	
54~	C120105400**	O-Ring (P12)	2	
55	C120105500	Round Plate	1	
56	C120105600	Inner Snap Ring (IRTW-18)	1	
57	0427000000	Ball	1	
58	C120105800	O-Ring (15.5 x 1.5)	2	
59	C120105900	Handle Cover	1	
60~	C120106000	Bit Sleeve	1	□,○,◆
61~	C120106100	Bit Spacer	1	□,○,◆
62~	C120106200	Spring	1	□,○,◆
63	C120106300	Snap Ring	1	□,○,◆
64	110100000L	Hook	1	
68~	C120106800	Pin	1	■,●,▲
69~	C120106900	Iron Pad	1	■,●,▲
70~	C120107000	Spring	1	■,●,▲

ACCESSORIES

65	C120106500	Allen Wrench (1.5 mm)	1
66	C120106600	Allen Wrench (4 mm)	1

■ = indicates EP-9015 part □ = indicates EP-9015D part
 ● = indicates EP-9020 part ○ = indicates EP-9020D part
 ▲ = indicates EP-9025 part ◆ = indicates EP-9025D part

FOOTNOTES

* Parts available in Motor repair kit (-RK*)
 ** Parts available in Pulse repair kit (-PRK*)



When ordering spare parts, please specify tool type, part number and description.
10000 SE PINE, PORTLAND, OR 97216
503-254-6600 FAX 503-254-7215