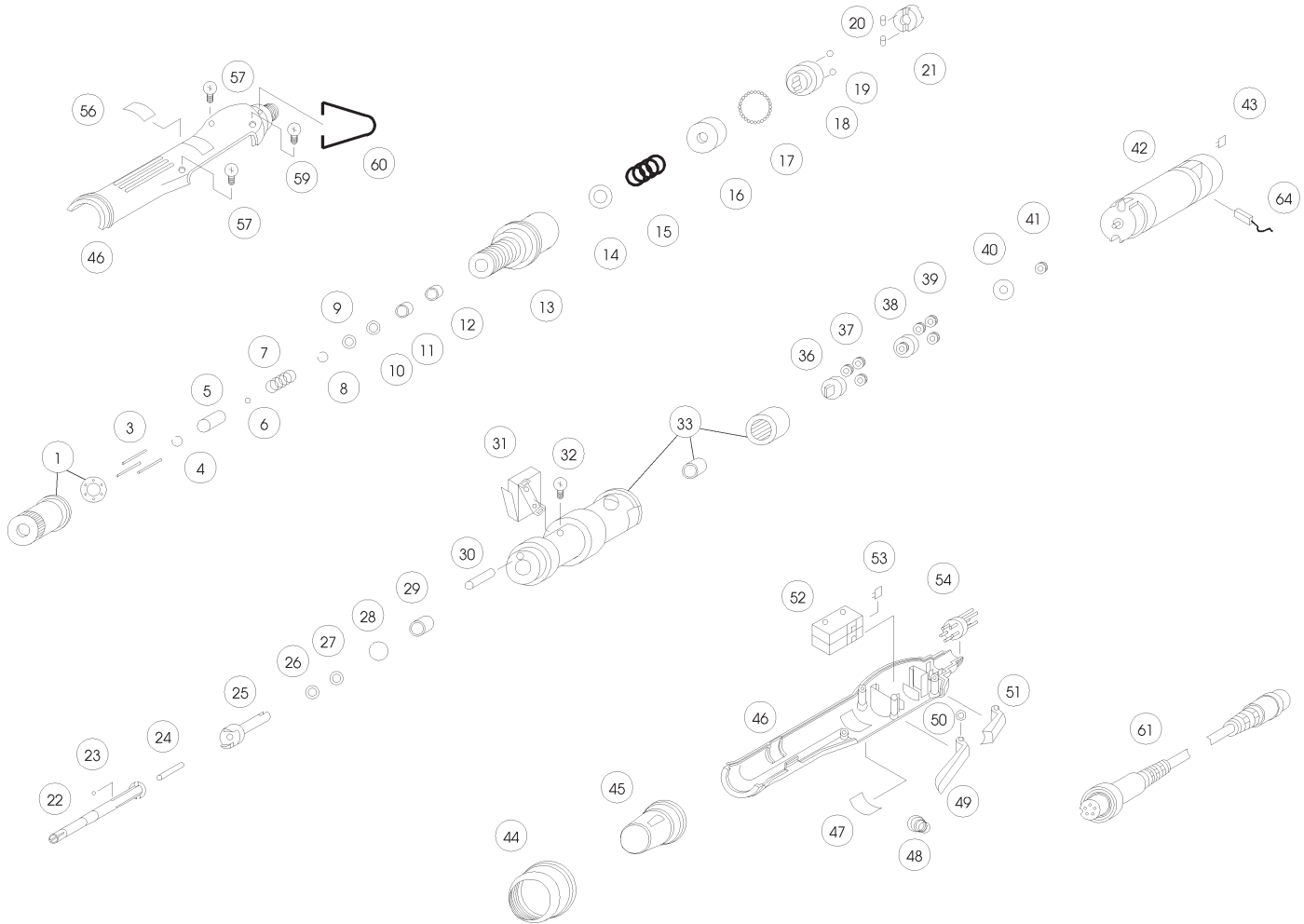


AE-4510

EXPLODED VIEW



PARTS LIST — FOR REFERENCE ONLY

Index Number	Part Number	Description	Qty.	Index Number	Part Number	Description	Qty.	Index Number	Part Number	Description	Qty.
1	4A4016	TORQUE ADJUSTMENT/WASHER SUB ASSEMBLY	1	23	4B1016	BALL BEARING	6	47	6C1055	CARBON MAINTENANCE BONNET (LEFT)	1
3	4N1026	TORQUE ADJUSTMENT PIN	3	24	4N2021	PIN	1	48	4S3051	FWD. SPRING	1
4	4U1051	C-RING	1	25	4K1022	TOP CLUTCH	1	49	6P1011	FWD. TRIGGER	1
5	4H2042	SLEEVE	1	26	4W6011	WASHER	1	50	4W1111	WASHER	1
6	4B2015	BALL BEARING	1	27	4W6011	WASHER	1	51	6P2011	REV. TRIGGER	1
7	4S3062	SLEEVE SPRING	1	28	4B1042	BALL BEARING	14	52	2S3012	MICRO SWITCH	1
8	4U1051	C-RING	1	29	4E1021	BEARING	1	52-1	2R1014	RESISTOR (NOT SHOWN)	1
9	4W6011	WASHER	1	30	4N1031	PIN	1	52-2	2A6013	MICRO SWITCH SUB. ASSEMBLY (NOT SHOWN)	1
10	4W6011	WASHER	1	31	2A7014	MICRO SWITCH SUB. ASSEMBLY	1	53	2C4011	CONDENSER (0.1K 100V)	1
11	4E1021	BEARING	1	32	8T1184	SCREW	1	54	2G1023	SP SOCKET	1
12	4E1021	BEARING	1	33	4A7014	CLUTCH HOUSING SUB ASSEMBLY	1	56	6C2055	CARBON MAINTENANCE BONNET-RIGHT	1
13	4T1062	FRONT HOUSING	1	36	4L2042	BOTTOM GEAR PLATE	1	57	8T1624	SCREW	1
14	4W3211	WASHER	1	37	4G2031	PINION GEAR (10T)	3	59	8T1663	SCREW	1
15	4S1081	TORQUE SPRING	1	38	4L1041	TOP GEAR PLATE	1	60	4F1012	HANGER RING	1
16	4E2031	THRUST BEARING	1	39	4G2031	PINION GEAR (10T)	3	61	2W2022	SP-SP CONNECTOR WIRE	1
17	4B1044	BALL BEARING	23	40	4W6012	WASHER	1	64	2B1012	BRUSH	2
18	4K3021	BOTTOM CLUTCH	1	41	4G1041	MAIN GEAR (9T)	1				
19	4B1019	BALL BEARING	2	42	2M2041	D.C. MOTOR (5Q2765 19088)	1				
20	4B3013	BALL BEARING	2	43	2C4011	CONDENSER (0.1K 100V)	1				
21	4K2025	MID CLUTCH	1	44	4H1081	RETAINING RING	1				
22	4C1081	TOOL BIT HOLDER	1	45	6H1021	ENGRAVING RING	1				
22-1	4C1091	SUB ANVIL (NOT SHOWN)		46	6A1015	HOUSING SET WITH BONNETS	1				

FOOTNOTES



AIMCO

When ordering spare parts, please specify tool type, part number and description.

10000 SE PINE, PORTLAND, OR 97216
503-254-6600 FAX 503-255-2615