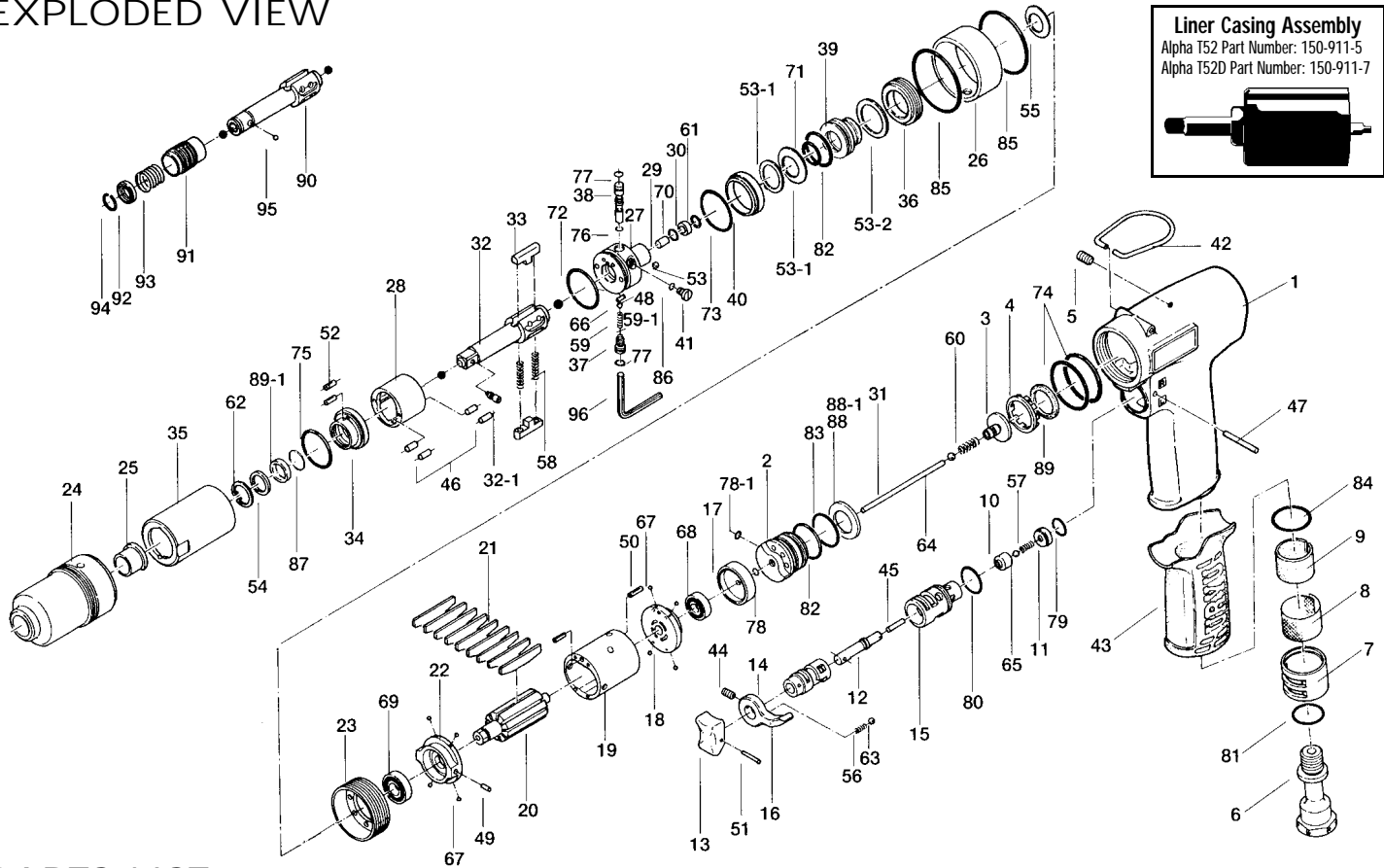


EXPLODED VIEW



PARTS LIST — FOR REFERENCE ONLY

| Index Number | Part Number | Description | Qty. | Index Number | Part Number | Description | Qty. | Index Number | Part Number | Description | Qty. |
|--------------|-------------|------------------------|------|--------------|-------------|-------------------------------------|------|--------------|-------------|--|------|
| 1 | 142-025-2 | Handle | 1 | 35 | 150-905-5 | Liner Casing | 1 | 68 | 982-401-0 | Ball Bearing (EE2) | 1 |
| 2 | 150-253-5 | Shut-Off Valve Bushing | 1 | 36 | 190-906-6 | Liner Casing Setter | 1 | 69 | 982-402-0 | Ball Bearing (EE3) | 1 |
| 3 | 150-254-9 | Shut-Off Valve | 1 | 37 | 150-907-5 | Relief Valve Spindle | 1 | 70 | 990-964-0 | O-Ring (ARP568-008) | 1 |
| 4 | 150-684-5 | Cushion Spacer | 1 | 38 | 150-970-7 | Relief Valve | 1 | 71 | 990-440-0 | O-Ring (1-JASO-1014) | 1 |
| 5 | 150-108-5 | Valve Plug | 1 | 39 | 150-972-6 | Accumulator | 1 | 72 | 990-329-0 | O-Ring (JW1530-19) | 1 |
| 6 | 173-091-0 | Air Inlet Bushing | 1 | 40 | 150-973-5 | Liner Casing Spacer | 1 | 73 | 990-331-0 | O-Ring (JW1530-21) | 1 |
| 7 | 173-780-0 | Exhaust Stack | 1 | 41 | 142-742-4 | Oil Plug | 1 | 74 | 990-337-0 | O-Ring (JW1530-27) | 2 |
| 8 | 173-042-0 | Silencer Net | 1 | 42 | 010-790-1 | Suspension Ring | 1 | 75 | 990-605-0 | O-Ring (25 x 1.45) | 1 |
| 9 | 173-835-0 | Filter (K-100) | 1 | 43 | 150-842-5 | Handle Cover | 1 | 76 | 990-623-0 | O-Ring (4.6 x 3.0 x 0.8) | 1 |
| 10 | 174-100-8 | Valve | 1 | 44 | 952-106-0 | Allen Head Dog Point Screw (M4 x 6) | 1 | 77 | 990-625-0 | O-Ring (5.5 x 3.5 x 1.0) | 2 |
| 11 | 150-019-5 | Valve Cover | 1 | 45 | 969-412-0 | Pin (G) (2 X 12) | 1 | 78 | 990-900-0 | O-Ring (SNS-2) | 1 |
| 12 | 150-103-5 | Valve Rod Bushing | 1 | 46 | 970-130-0 | Pin (2.45 x 4.5) | 4 | 78-1 | 990-901-0 | O-Ring (SNS-3) | 1 |
| 13 | 177-107-5 | Valve Lever | 1 | 47 | 971-123-0 | Pin (2 x 23) | 1 | 79 | 990-911-0 | O-Ring (SNS-12) | 1 |
| 14 | 480-210-9 | Reverse Valve | 1 | 48 | 972-011-0 | Roller Pin (1.5 x 4.8) | 1 | 80 | 990-912-0 | O-Ring (SNS-14) | 1 |
| 15 | 174-211-8 | Reverse Valve Bushing | 1 | 49 | 973-006-0 | Roll Pin (2 x 6) | 1 | 81 | 990-916-0 | O-Ring (SNS-18) | 1 |
| 16 | 480-212-8 | Reverse Lever | 1 | 50 | 973-007-0 | Roll Pin (2 x 7) | 2 | 82 | 990-979-0 | O-Ring (SNS-20) | 2 |
| 17 | 150-291-5 | Rear Plate Spacer | 1 | 51 | 973-014-0 | Roll Pin (2 x 14) | 1 | 83 | 990-919-0 | O-Ring (SNS-22) | 1 |
| 18 | 150-285-5 | Rear Plate | 1 | 52 | 973-040-0 | Roll Pin (1.5 x 5) | 2 | 84 | 990-921-0 | O-Ring (SNS-22.4) | 1 |
| 19 | 150-286-6 | Cylinder | 1 | 53 | 150-064-5 | Plug | 1 | 85 | 990-333-0 | O-Ring (JW1530-23) | 2 |
| 20 | 150-287-5 | Rotor | 1 | 53-1 | 155-167-2 | Belleville Spring (609) | 2 | 86 | 990-791-0 | O-Ring (SNS-3)(NOK) | 1 |
| 21 | 150-288-5 | Blade (PC) | 9 | 53-2 | 150-682-9 | Buffer | 1 | 87 | 990-152-0 | O-Ring (P12-NTN) | 1 |
| 22 | 150-289-5 | Front Plate | 1 | 54 | 150-807-6 | Spacer | 1 | 88 | 944-227-0 | Supporting Ring (16 x 25.5 x 2) (Standard) | 1 |
| 23 | 177-036-5 | Casing Connector | 1 | 55 | 975-752-0 | Adjusting Spacer (15 x 10 x T) | 1 | 88-1 | 944-226-0 | Supporting Ring (16 x 25.5 x 2.1) | 1 |
| 24 | 152-439-6 | Front Casing | 1 | 56 | 976-006-0 | Spring (3 x 5) (0.4) | 1 | 89 | 944-228-0 | Supporting Ring (26 x 18 x 1.5) | 1 |
| 25 | 190-328-6 | Anvil Bushing | 1 | 57 | 976-229-0 | Spring (3.2 x 13) (0.3) | 1 | 89-1 | 944-213-0 | Supporting Ring (12 x 16 x 1) | 1 |
| 26 | 152-384-6 | Hammer Casing Band | 1 | 58 | 976-791-0 | Spring (3.3 x 21) (0.4) WPC | 2 | 90 | 177-350-7 | Driver Anvil | 1 |
| 27 | 150-901-5 | Rear Liner Plate | 1 | 59 | 976-317-0 | Spring (3 x 7.3) (0.4) | 1 | 91 | 011-351-1 | Bit Sleeve | 1 |
| 28 | 177-902-5 | Liner | 1 | 60 | 976-451-0 | Spring (4.4 x 11) (0.45) | 1 | 92 | 011-352-1 | Bit Spacer | 1 |
| 29 | 150-546-5 | Piston | 1 | 61 | 978-090-0 | Snap Ring (9 x 0.7) | 1 | 93 | 976-327-0 | Spring (13.5 x 11) | 1 |
| 30 | 150-557-5 | Piston Bushing | 1 | 62 | 979-317-0 | Inner Snap Ring (IRTW-17) | 1 | 94 | 978-117-0 | Snap Ring (11.7 x 1) | 1 |
| 31 | 187-130-3 | Piston Rod | 1 | 63 | 981-002-0 | Ball (1/8) | 1 | 95 | 981-002-0 | Ball (1/8) | 1 |
| 32 | 891-307-1 | Anvil Assembly (P) | 1 | 64 | 981-003-0 | Ball (5/32) | 1 | 59-1 | 976-393-0 | Spring (3 x 7.3) (0.4) N5.5 | 1 |
| 32-1 | 891-300-1 | Socket Pin Assembly | 1 | 65 | 981-155-0 | Ball (3.5MM) | 1 | | | | |
| 33 | 177-440-5 | Driving Blade | 2 | 66 | 981-225-0 | Ball (2.5MM) | 1 | | | | |
| 34 | 150-904-5 | Front Liner Plate | 1 | 67 | 981-045-0 | Ball (1.5MM) | 8 | | | | |

ACCESSORIES

| | | | |
|----|-----------|--------------------------|---|
| 96 | 939-109-0 | Allen Wrench 2 (64 x 64) | 1 |
|----|-----------|--------------------------|---|

FOOTNOTES

■ = Parts for Alpha T52D Driver Head

AIMCO also offers a complete line of standard & special adapters, bits, sockets and extensions.



When ordering spare parts, please specify tool type, part number and description.

10000 SE PINE, PORTLAND, OR 97216
503-254-6600 FAX 503-255-2615