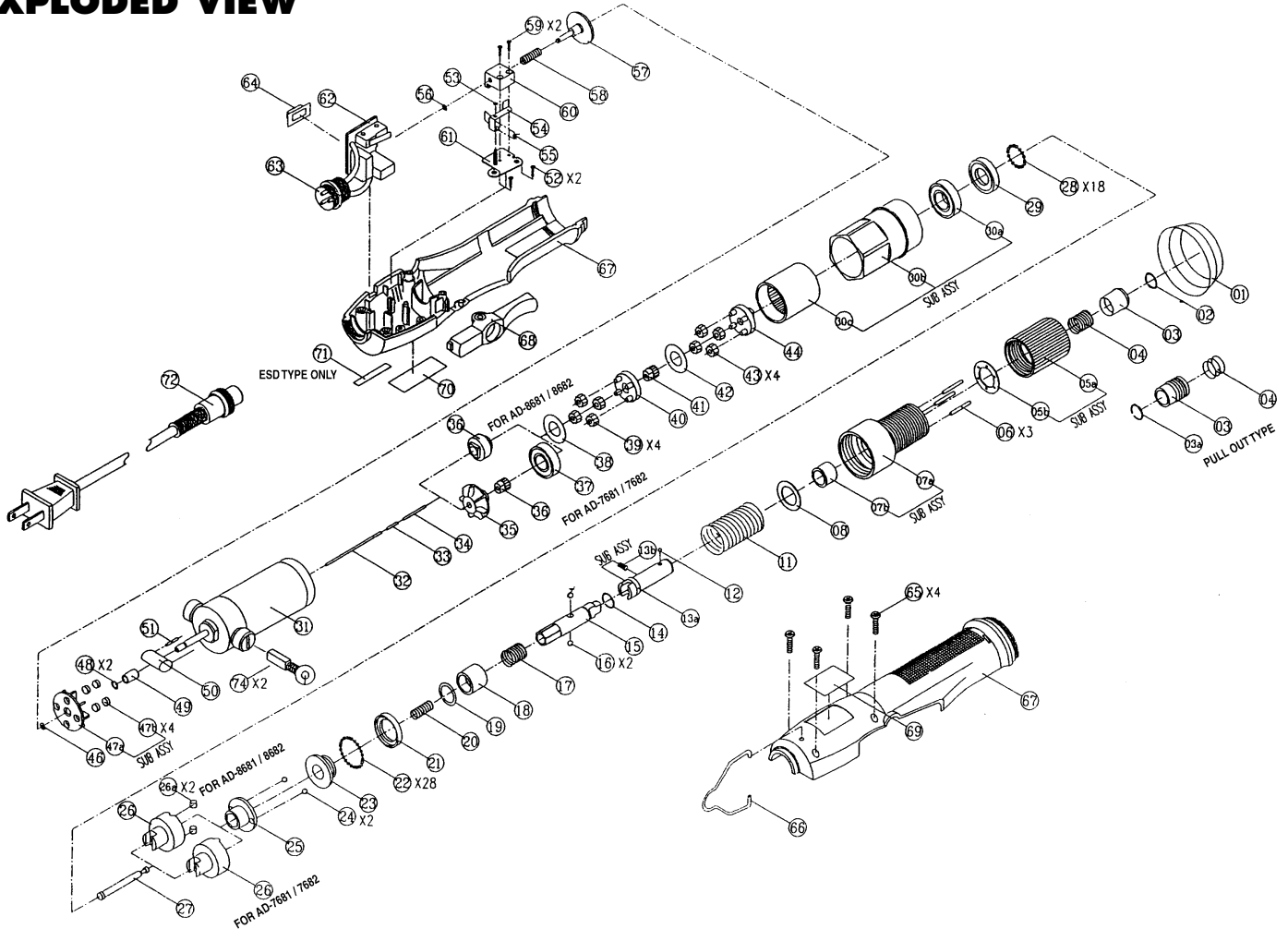


AE-8681 ELECTRIC SCREWDRIVER

EXPLODED VIEW



PARTS LIST — FOR REFERENCE ONLY

Index Number	Part Number	Description	Index Number	Part Number	Description	Index Number	Part Number	Description
001	6R5011	RETAINING RING	025	4K2034	HAMMER (FOR AD-8681,8682)	052	8T2695	SCREW $\varnothing 3.0 \times 8$ pts
002	4U1051	SNAP RING	026	4K1061	HAMMER SHANK (FOR AD-8681,8682)	053	6W1012	PLASTIC WASHER
003	4H2048	BIT SLIDE SLEEVE (PULL OUT TYPE)	026a	4B3015	NEEDLE ROLLER (FOR AD-8681,8682)	054	4S5016	SPRING PLATE
003a	4U1032	SNAP RING (PULL OUT TYPE)	027	4C2041	SLIDE PIN	055	4S3101	SUPPORT SPRING
004	4S3065	SLEEVE SPRING (PULL OUT TYPE)	028	4B1206	BALL $\varnothing 2.5$	056	4U1061	SNAPPING $\varnothing 0.5 \times \varnothing 2.5$
005	4A4021	REGULATING HANDLE SUB ASSY	029	4E2014	RETAINER 14.7	057	4K4011	BRAKING DISK
005a	4J1063	REGULATING HANDLE	030	4A7012	GEAR HOUSING SUB ASSY (FOR AD-8681, 8682)	058	4S2026	SPRING $\varnothing 0.55$
005b	4W4712	WASHER	030a	4E1019	BALL-BEARING 6901ZZ	059	8T3325	SCREW $\varnothing 2.0 \times 8$ pts
006	4N1125	PUSH PIN $\varnothing 2.0 \times 17.8$	030b	4R1064	GEAR HOUSING	060	4V1026	SLIDE BASE
007	4A1018	HAMMER CASING SUB ASSY	030c	4X1065	INNER GEAR BOX	061	4V1122	FIXING PLATE
007a	4T1072	HAMMER CASING	031	2M5021	MOTOR 24N3380-17030-40Y (FOR 115V)	062	2A6023	PWB SUB ASSY
007b	4Q1064	ANVIL BUSHING	032	4N4024	GUIDE PIN A $\varnothing 6 \times 95$	062a	2S3011	MICRO SWITCH
008	4W4212	WASHER	033	4N4031	GUIDE PIN B $\varnothing 1.5 \times 10$	062b	2F3013	PROTECTOR
011	4S1102	SPRING	034	4N1120	GUIDE PIN C $\varnothing 2.0 \times 22.8$	062c	2S2019	FWD/REV SLIDE SW
012	4B1026	BALL $\varnothing 2.5$ (FOR 1/4" HEX BITSHANK)	036	6G9011	CONNECT GEAR (10T) (FOR AD-8681, 8682)	063	2G1016	3P PLUG
013	4A2028	BIT HOLDER SUB ASSY (FOR 1/4" HEX BITSHANK)	038	4W3012	WASHER	064	6V1033	PUSH BUTTON (BLK)
013a	4C1124	BIT HOLDER (PULL OUT TYPE)	039	4G2687	FIRST PLANET GEAR (15T) (FOR AD-8681, 8682)	065	6V1034	PUSH BUTTON (ESD) (BLK)
013b	8K2018	SCREW $\varnothing 3.0 \times 8$	040	4L1882	FIRST GEAR CAGE WITH GEAR (FOR AD-8681, 8682)	065	8T2687	SCREW $\varnothing 3.0 \times 12$ pts
014	4U1052	SNAP RING $\varnothing 1.2$	043	4G2688	SECOND PLANET GEAR (15T) (FOR AD-8681, 8682)	066	4F1041	HANGER RING
015	4C1111	ANVIL	044	4L2823	SECOND GEAR CAGE (FOR AD-8681, 8682)	067	6Z1083	PLASTIC HOUSING (LIGHT GRAY)
016	4B1029	BALL $\varnothing 4.0$	046	4U1066	SNAPPING $\varnothing 0.6 \times \varnothing 3.4$	067	6Z1080	PLASTIC HOUSING (ESD) (BLK)
017	4S3066	SPRING $\varnothing 0.7$	047	6A3011	FAN SUB ASSY	068	6P1027	TRIGGER (LIGHT GRAY)
018	4K3051	SLIDE SLEEVE	047a	6R2012	FAN	068	6P1020	TRIGGER (ESD) (BLK)
019	4W3311	WASHER	047b	2V1016	MAGNET	069	7L1341-0	MODEL LABEL (FOR EACH MODEL YOU ORDERED)
020	4S2025	SPRING $\varnothing 5$	048	6W1013	PLASTIC WASHER t0.5	070	7L3016	CAUTION LABEL
021	4E2015	RETAINER t3.7	048	6W1014	PLASTIC WASHER t0.25	071	7L3021	CAUTION LABEL (FOR ESD ONLY)
022	4B1014	BALL $\varnothing 2.0$	049	4Q1073	ANVIL BUSHING	072	2W1081	AC CORD (FOR USA)
023	4K3047	DRIVEN CLUTCH (FOR AD-8681,8682)	050	2C6712	CAPACITOR 1K 400V	073	2G2016	3P SOCKET FOR MAINTENANCE USE
024	4B2018	BALL $\varnothing 4.0$ (FOR AD-8681,8682)	051	2R2017	RESISTOR 100K Ω	074	2B1015	CARBON BRUSH (PAIR)



AIMCO

When ordering spare parts, please specify tool type, part number and description.

10000 SE PINE, PORTLAND, OR 97216
503-254-6600 FAX 503-255-2615

FOOTNOTES

AIMCO offers a complete line of Tool Support products.
Visit our website at www.aimco-global.com