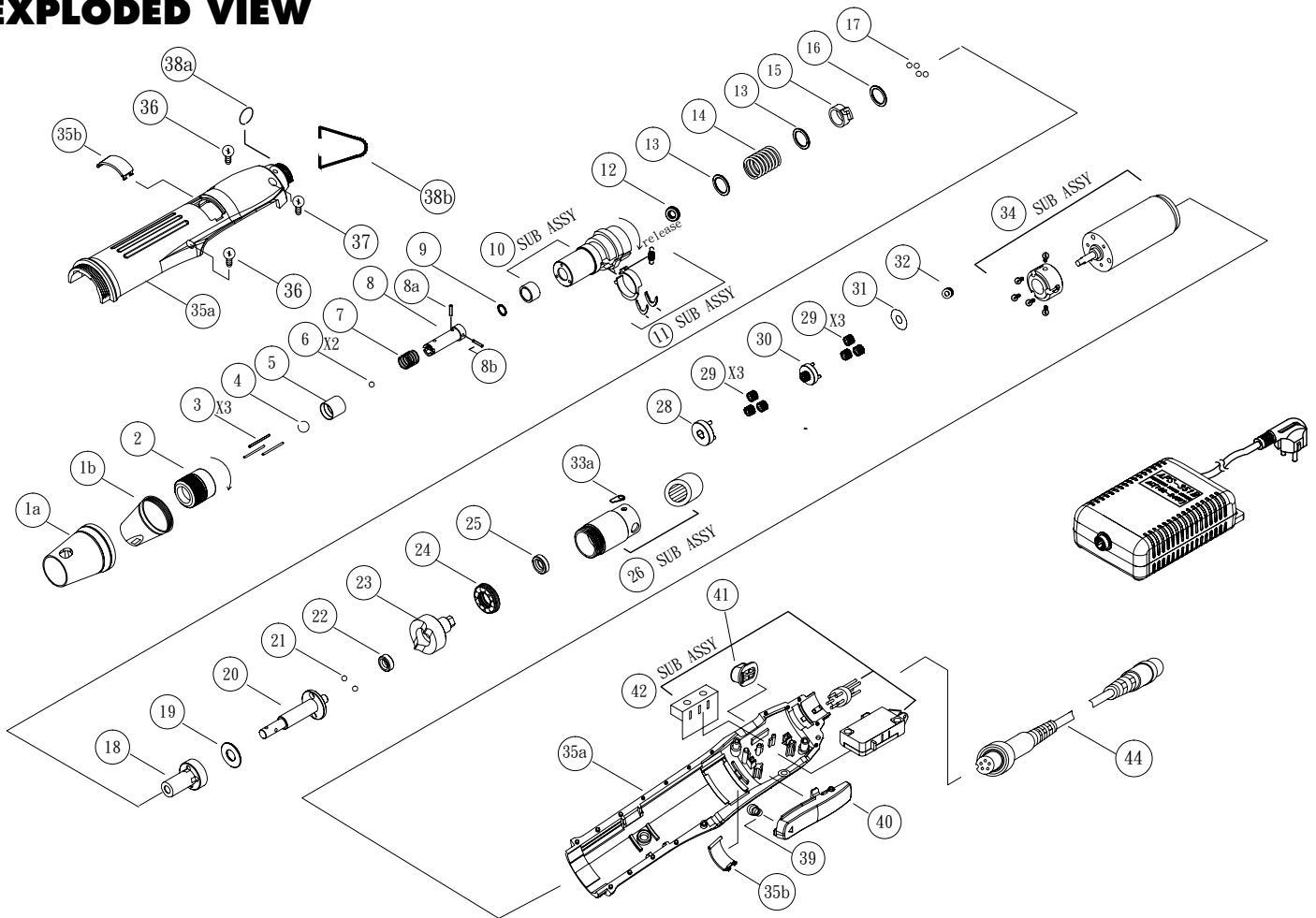


EPTS-E5600 1/4" CLUTCH SHUT OFF SCREWDRIVER

EXPLODED VIEW



PARTS LIST — FOR REFERENCE ONLY

Index Number	Part Number	Description	Qty.	Index Number	Part Number	Description	Qty.	Index Number	Part Number	Description	Qty.
1a	6H1064	Engraving Ring	1	18	4V3031	Anvil Fixing Sleeve	1	35b	6C5024	Carbon Maintenance (Blue)	1
1b	6H1035	Retaining Ring	1	19	4W4217	Washer (22.2 x 14 x T = 1.0)	1	36	8T1624	Screw (2.0 x L = 6)	2
2	4J1086	Regulating Handle	1	20	4C1027	Anvil	1	37	8T1663	Screw (2.6 x L = 5)	1
3	4N1025	Push Pin (L = 17.6)	3	21	4B1029	Ball (4.0)	4	38a	4F1023	Hanger Ring	1
4	4U1052	Snap Ring (1.2 x 9.2)	1	22	L-1050	Ball Bearing (5 x 10 x T = 4.0)	1	38b	4F1012	Hanger Ring	1
5	4H2082	Bit Slide Sleeve	1	23	4K2051	Clutch	1	39	4S3051	Trigger Spring (0.55)	1
6	4B1024	Ball (2.0) 1/4"	2	24	CRT9-19	Thrust Bearing	1	40	6P4013	Fwd. Trigger	1
7	4S3065	Sleeve Spring (0.6) 1/4"	1	25	4E1016	Ball Bearing (8 x 14 x T = 4.0)	1	41	6P4023	Rev. Trigger	1
8	4C1194	Bit Holder	1	26	4A7036	Gear Housing Sub Assy	1	42	2A6039A	Pwb Sub Ass'y	1
8a	4N1147	Spring Cotter (2 x 9.8)	1	28	4L1044	First Gear Cage	1	44	2W2122-2	5p-5p Cord	1
8b	4N2038	Spring Cotter (2 x 10.8)	1	29	4G2024	Planet Gear (12T)	3				
9	4W6015	Washer (9.5 x 7 x T = 0.2)	1-2	30	4L2064	Second Gear Cage	1				
10	4A1031	Hammer Casing Sub Assy	(1)	31	4W3116	Washer (18.9 x 14.6 x T = 0.7)	1				
11	2A7018	Micro Switch Sub Assy	(1)	32	4G1046	Driven Gear (16T)	1				
12	CRT6-12	Ball Bearing	1	33a	4W2013	Washer	1				
13	4W6413	Washer	2	33b	8F1065	Screw (2.5 x L = 6)	2				
14	4S1118	Spring (1.9)	1	34	2A1101	Motor Sub Ass'y	(1)				
15	6V1053	Micro Switch Sleeve	1	35	6A1034	Plastic Housing With Carbon Maintenance Bonnet Set (Blue)	1				
16	4W4812	Washer	1	35a	6Z1224	Plastic Housing Set (Blue)	1				
17	4B1029	Ball (4.0)	4								

ACCESSORIES

2W1025	AC Cord for U.S.	1
2W1045	AC Cord for U.K.	1
2W1055	AC Cord for Australia	1
2W1065	AC Cord for Europe	1
2W1076	AC Cord for South Africa	1

AIMCO also offers a complete line of standard & special adapters, bits, sockets, and extensions

FOOTNOTES

EAGLE GROUP
A Division of AIMCO
10000 SE PINE
PORTLAND, OR 97216
503-254-6600
FAX 503-255-2615

When ordering spare parts, please specify tool type, part number, and description