

Rotary Transducers - for Dynamic or Residual Testing

- No “brush bounce” when used with pulse tools, stall tools, right angle nutrunners, screwdrivers, multiples, & DC powered tools
- Torque or torque/angle models available in sizes from 2 to 5000 Nm (15 in-lb to 1025 ft-lb)
- Small compact design, which allows use in limited access areas
- Rugged aluminum alloy housing
- Lifetime warranty on slip ring & brush



*For Accurately Measuring
Torque of Assembly Tools!*



Stationary Transducers - for Torque Testing and Calibration

- Industrial transducers used in tool crib and production applications for hand & power tools
- Metrology transducers used as master transducers in metrology labs *only*
- Precision female square drives to facilitate testing
- Available in 1/4" to 1" square drive
- Heavy-duty stainless steel allows 140% overload capacity

Joint Simulators

- Allows for testing of power tools on a repeatable, linear, and accurate simulated joint
- Joint rates can be modified for various applications
- Flanged for easy mounting to work surface

Two Styles Available - UTA & IS:

- UTA style incorporates a “smart chip” for plug-and-play operation with TorqueStar Analyzer
- IS (Industry Standard) style is designed to work with other brands of torque analyzers or data collectors. Includes a military type connector with a torque signal of 2 mv/v excitation

Corporate Headquarters

10000 SE Pine Street
Portland, OR 97216
(800) 852-1368
(800) 582-9015 FAX

1204 E. Maple Road
Troy, MI 48083
(248) 583-1180
(248) 583-7115 FAX

Verlaine 706, Col. Obispado
Monterrey NL CP 64040, Mexico
52818-333-6447
52818-348-6854 FAX

09/02 Printed in U.S.
©2002 AIMCO



AIMCO
www.aimco-global.com

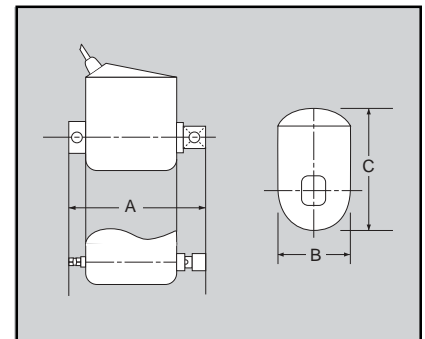
Rotary Transducers

DRIVE	MAX TORQUE	UTA PART #	IS PART #	TORQUE ONLY*	TORQUE/ ANGLE*	LENGTH (A)	THICKNESS (B)	WIDTH (C)	WEIGHT LB
1/4" Hex	15 in-lb	UTA-449-0002		-0	-A	4.6"	1.1"	2.2"	1.0
1/4" Hex	44 in-lb	UTA-449-0005	IS-449-0005	-0	-A	4.6"	1.1"	2.2"	1.0
1/4" Hex	88 in-lb	UTA-450-0010		-0	-A	4.6"	1.1"	2.2"	1.0
1/4" Hex	180 in-lb	UTA-450-0020	IS-450-0020	-0	-A	4.6"	1.1"	2.2"	1.0
1/4" Sq.	100 in-lb	UTA-451-0010		-0P	-AP	2.9"	1.1"	2.2"	1.0
1/4" Sq.	180 in-lb	UTA-451-0020	IS-451-0020	-0P	-AP	2.9"	1.1"	2.2"	1.0
3/8" Sq.	220 in-lb	UTA-452-0025		-0P	-AP	3.0"	1.1"	2.4"	1.2
3/8" Sq.	50 ft-lb	UTA-452-0075	IS-452-0075	-0P	-AP	3.0"	1.6"	2.7"	1.2
1/2" Sq.	133 ft-lb	UTA-453-0180	IS-453-0180	-0P	-AP	3.4"	1.6"	2.7"	1.5
3/4" Sq.	180 ft-lb	UTA-454-0250		-0P	-AP	4.1"	2.0"	3.1"	2.2
3/4" Sq.	368 ft-lb	UTA-454-0500	IS-454-0500	-0P	-AP	4.1"	2.0"	3.1"	2.2
1" Sq.	550 ft-lb	UTA-455-0750		-0P	-AP	4.9"	2.4"	3.6"	4.0
1" Sq.	1025 ft-lb	UTA-455-1400	IS-455-1400	-0P	-AP	4.9"	2.4"	3.6"	4.0

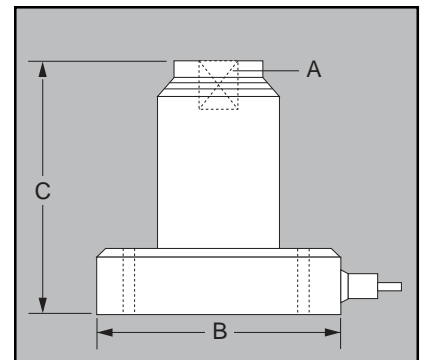
*Add this suffix to the end of the part number to indicate torque or torque/angle transducers

Stationary Transducers

DRIVE SIZE (A)	MAX TORQUE	UTA PART #	IS PART #	BASE DIAMETER (B)	HEIGHT (C)
1/4"	50 in-lb	UTA-164-0-25		3.9"	3.0"
1/4"	100 in-lb	UTA-165-0-25	IS-165-0-0	3.9"	3.0"
1/4"	250 in-lb	UTA-166-0-25	IS-166-0-0	3.9"	3.0"
3/8"	50 ft-lb	UTA-167-0-35		3.9"	3.4"
3/8"	100 ft-lb	UTA-168-0-35	IS-168-0-0	3.9"	3.4"
1/2"	200 ft-lb	UTA-169-0-35	IS-169-0-0	3.9"	3.7"
3/4"	400 ft-lb	UTA-170-0-35		3.9"	4.4"
3/4"	750 ft-lb	UTA-171-0-35	IS-171-0-1	3.9"	4.4"
1"	1250 ft-lb	UTA-172-0-35	IS-172-0-1	3.9"	4.8"



CheckStar Rotary Transducer



Stationary Transducer

Rotary Transducers / Stationary Transducers

- **All Models**

Accuracy: Better than +/- 1% of FSD

Zero Drift: Less than +/- 0.1% of FSD per degree Celsius

Coil Cable: 1 Meter strain relieved cable on UTA models only
- **Rotary Models**

Overload Capacity: 125% FSD

Drag Friction: Less than 1% rated torque or 0.1 Nm
- **Stationary Models**

Accuracy: Metrology models better than +/- 0.25% IR

Overload Capacity: 140% FSD

Mounting: 4 Holes of 8.3 mm diameter on 80 mm circle diameter