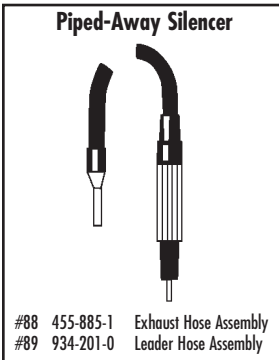
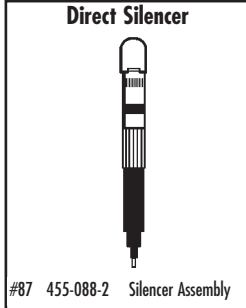
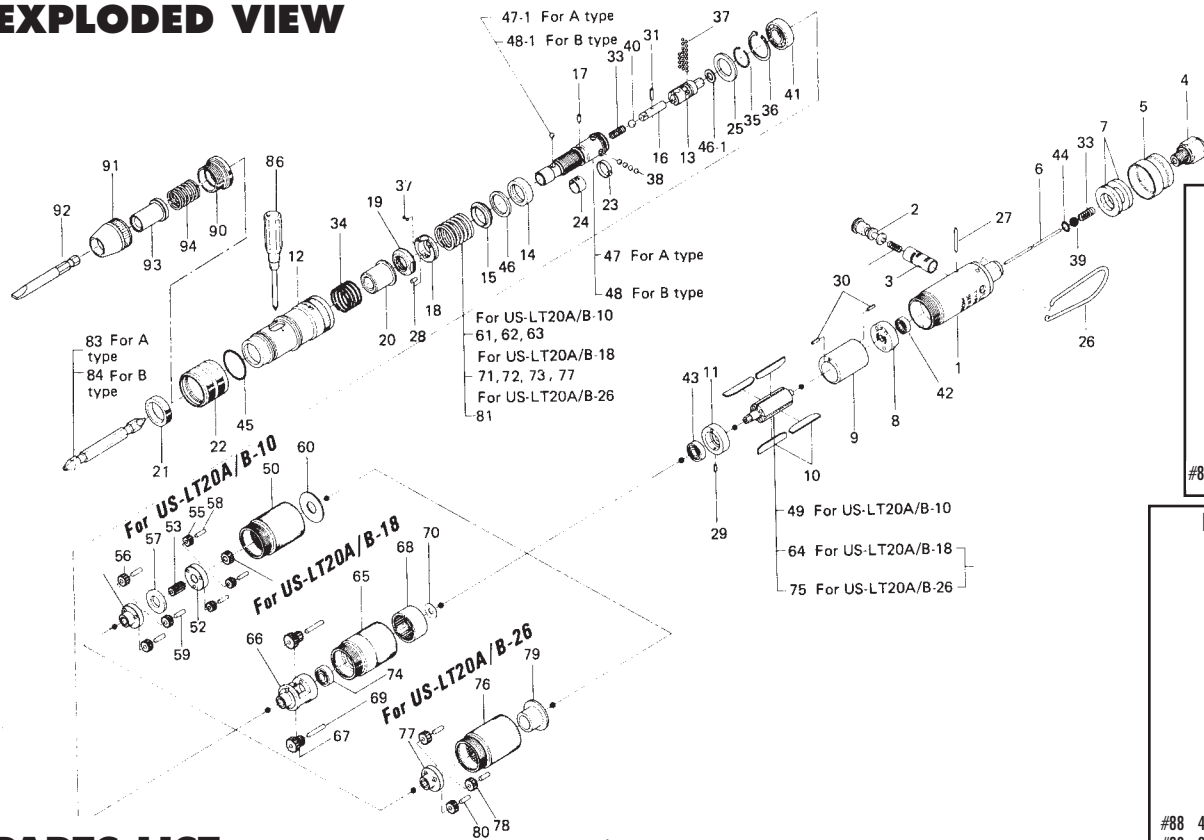


US-LT20 SERIES SCREWDRIVERS

EXPLODED VIEW



PARTS LIST — FOR REFERENCE ONLY

Index Number	Part Number	Description	Qty.
1	470-025-8	Casing	1
2	893-055-1	Reverse Valve (Lock)	1
3	470-211-8	Reverse Valve Bushing	1
4	405-091-1	Air Inlet Bushing	1
5	455-782-1	Exhaust Deflector	1
6	470-104-8	Valve Rod	1
7	470-835-8	Filter	2
8	470-285-8	Rear Plate	1
9	470-286-8	Cylinder	1
10	470-288-1	Blade (PC)	4
11	470-289-8	Front Plate	1
12	470-369-9	Clutch Casing	1
13	470-346-8	Cam	1
14	470-375-9	Cam Ring	1
15	470-164-9	Spring Setter	1
16	470-318-8	Pilot Pin	1
17	470-764-8	Notch Pin	1
18	470-562-8	Retainer	1
19	470-257-8	Regulating Screw	1
20	470-351-7	Bit Sleeve	1
21	470-567-7	Bushing	1
22	470-370-8	Clutch Casing Sleeve	1
23	470-670-8	Band	1
24	470-356-8	Bit Band	1
25	975-153-0	Spacer (21 x 14.5 x 1)	1
26	401-790-1	Suspension Ring	1
27	970-017-0	Pin (H) (1.5 x 18)	1
28	970-091-0	Pin (H) (2 x 4.5)	1
29	973-000-0	Roll Pin (1.5 x 4)	1
30	973-001-0	Roll Pin (1.5 x 6)	2
31	973-003-0	Roll Pin (1.5 x 8)	1
32	976-048-0	Spring (4 x 10)	1
33	976-058-0	Spring (4.5 x 11)	2
34	976-427-0	Spring (17.5 x 10)	1
35	978-150-0	Snap Ring (15 x 1)	1
36	979-320-0	Inner Snap Ring (IRTW-20)	1
37	981-000-0	Ball (1/16)	22

Index Number	Part Number	Description	Qty.
38	981-002-0	Ball (1/8)	4
39	981-206-0	Ball (1/4)	1
40	981-004-0	Ball (3/16)	1
41	982-036-0	Ball Bearing (699)	1
42	987-038-0	Miniature Ball Bearing (R-1140ZZ)	1
43	987-041-0	Miniature Ball Bearing (R-1350ZZ)	1
44	990-903-0	O-Ring (SNS-5)	1
45	990-918-0	O-Ring (SNS-20)	1
46	944-014-0	Back-up Ring (P-1 4)	1
46-1	470-344-8	Cam Spacer	1
47	470-319-3	Anvil	1
47-1	981-155-0	Ball (3.5)	1
48	470-319-4	Anvil	1
48-1	981-002-0	Ball (1/8)	1
49	470-287-8	Rotor	1
50	470-029-8	Gear Casing	1
51	470-460-8	Rotor Gear	1
52	470-480-8	First Gear Cage	1
53	470-445-8	Middle Gear	1
54	470-485-8	Second Gear Cage	1
55	470-470-8	First Planet Gear	3
56	470-471-8	Second Planet Gear	3
57	471-483-7	Gear Cage Spacer	1
58	972-008-0	Needle Roller (2 x 8)	3
59	972-033-0	Needle Roller (2.5 x 8)	3
60	975-151-0	Spacer (22 x 8 x 1.5)	1
61	976-432-0	Spring (Standard: 18 x 20)	1
62	976-431-0	Spring (Weaker: 18 x 20)	1
63	976-430-0	Spring (Weakest: 17.5 x 20)	1
64	470-287-6	Rotor	1
65	470-029-6	Gear Casing	1
66	470-480-6	Gear Cage	1
67	470-470-6	Planet Gear	2
68	470-465-6	Internal Gear	1
69	972-037-0	Needle Roller (2.5 x 15)	2
70	975-009-0	Spacer (9 x 5.2 x 0.3)	1
71	976-431-0	Spring (Standard: 18 x 20)	1

Index Number	Part Number	Description	Qty.
72	976-432-0	Spring (Strong: 18 x 20)	1 ▲
73	976-430-0	Spring (Weak: 17.5 x 20)	1 ▲
74	987-013-0	Miniature Ball Bearing (R-1350)	1 ▲
75	470-287-6	Rotor	1 ●
76	470-029-8	Gear Casing	1 ●
77	470-480-4	Gear Cage	1 ●
78	471-470-3	Planet Gear	3 ●
79	470-483-4	Gear Cage Spacer	1 ●
80	972-033-0	Needle Roller (2.5 x 8)	3 ●
81	976-430-0	Spring (Standard: 17.5 x 20)	1 ●

ACCESSORIES

83	916-710-0	(+) Double bit (No.2 x 70) For A-type	1
84	916-810-0	(+) Double Bit (No.2 x 75) for B-type	1
86	939-402-0	Manual Driver No2 (Ø5)	1

ACCESSORIES for Direct Type

87	455-088-2	Silencer Assembly	1
----	-----------	-------------------	---

ACCESSORIES for Piped-Away Type

88	455-885-1	Exhaust Hose Assembly	1
89	934-201-0	Leader Hose Assembly	1

ACCESSORIES for Slotted Head Bit & Finder

90	470-082-8	Bit Casing Set Screw	1
91	471-057-7	Bit Casing	1
92	916-030-0	(-) Bit (5 x 56) (6.35H)	1
93	917-350-0	Finder (7.3 x 56 x 24)	1
94	976-330-0	Spring (13.8 x 18 x 0.8)	1

FOOTNOTES

- = Parts for US-LT20A Series
- = Parts for US-LT20B Series
- * = Parts for US-LT20A-10 & US-LT20B-10
- ▲ = Parts for US-LT20A-18 & US-LT20B-18
- = Parts for US-LT20A-26 & US-LT20B-26

AIMCO also offers a complete line of standard & special adapters, bits, sockets and extensions.



AIMCO

When ordering spare parts, please specify tool type, part number and description.

10000 SE PINE, PORTLAND, OR 97216
503-254-6600 FAX 503-255-2615