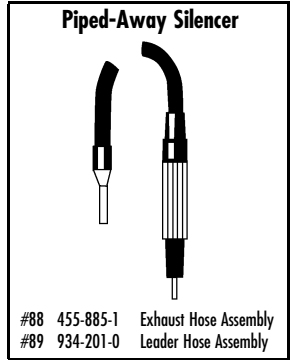
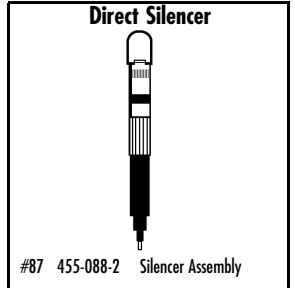
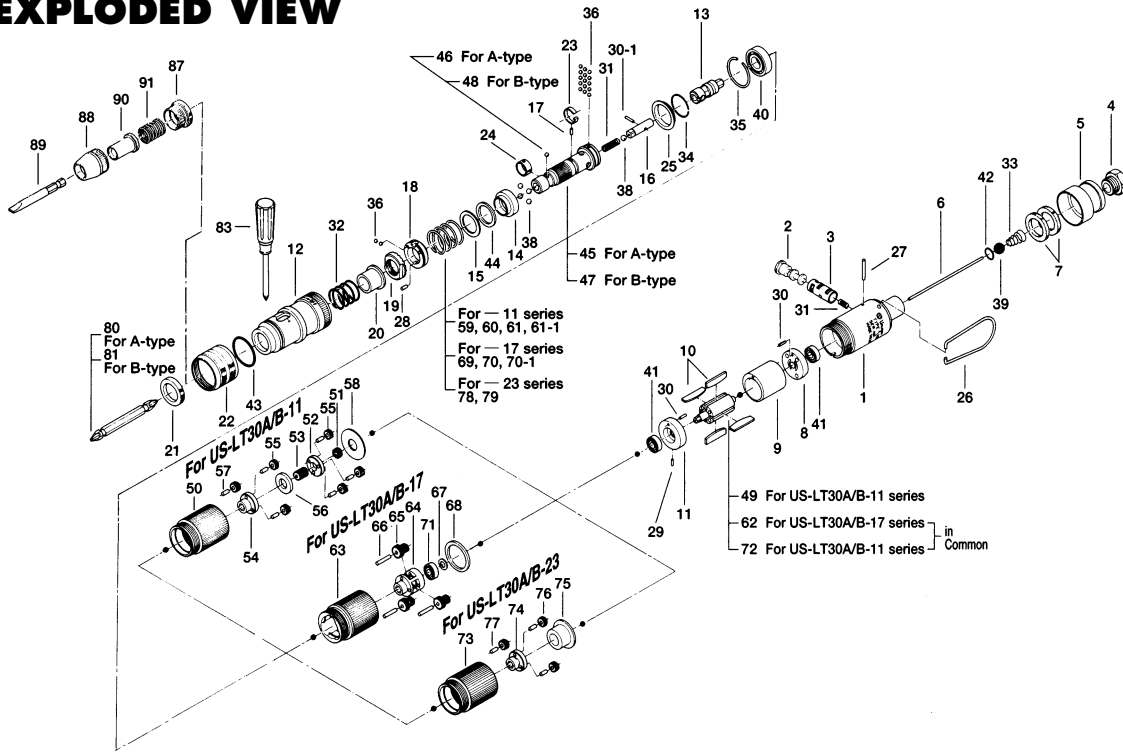


US-LT30 SERIES SCREW DRIVERS

EXPLODED VIEW



PARTS LIST — FOR REFERENCE ONLY

Index Number	Part Number	Description	Qty.
1	471-025-8	Casing	1
2	893-056-1	Reverse Valve (Lock)	1
3	471-211-7	Reverse Valve Bushing	1
4	480-091-8	Air Inlet Bushing	1
5	408-782-1	Exhaust Deflector	1
6	471-104-7	Valve Rod	1
7	471-835-5	Filter (F100)	2
8	471-285-7	Rear Plate	1
9	471-286-7	Cylinder	1
10	471-288-0	Rotor Blade (PC)	4
11	471-289-7	Front Plate	1
12	471-369-7	Clutch Casing	1
13	471-346-5	Cam	1
14	471-375-8	Cam Ring	1
15	471-164-8	Spring Setter	1
16	471-318-5	Pilot Pin	1
17	471-764-7	Notch Pin	1
18	471-562-7	Retainer	1
19	471-257-7	Regulating Screw	1
20	471-351-6	Bit Sleeve	1
21	471-567-6	Bushing	1
22	471-370-7	Clutch Casing Sleeve	1
23	471-670-7	Band	1
24	471-356-7	Bit Band	1
25	462-334-7	Anvil Spacer	1
26	401-790-1	Suspension Ring	1
27	972-020-0	Roller Pin (2 x 19.8A)	1
28	970-091-0	Pin (2 x 4.5)	1
29	973-001-0	Roll Pin (1.5 x 6)	1
30	973-003-0	Roll Pin (1.5 x 8)	2
30-1	969-470-0	Pin (E) (2 x 8)	1
31	976-058-0	Spring (4.5 x 11)	2
32	976-450-0	Spring (18.5 x 10)	1
33	977-157-0	Cone Spring (7 x 11 x 20)	1
34	978-185-0	Snap Ring (19 x 1)	1
35	978-229-0	Snap Ring (23 x 1)	1
36	981-001-0	Ball (3/32)	17

Index Number	Part Number	Description	Qty.
38	981-003-0	Ball (5/32)	5
39	981-208-0	Ball (5/16) Black	1
40	982-901-0	Ball Bearing (6900)	1
41	987-041-0	Miniature Ball Bearing (R1 350ZZ)	2
42	990-004-0	O-Ring (P-6)	1
43	990-919-0	O-Ring (SNS-22)	1
44	944-016-0	Back-up Ring (P-16)	1
45	471-319-5	Anvil	1
46	981-003-0	Ball (5/32)	1
47	471-319-2	Anvil	1
48	981-004-0	Ball (3/16)	1
49	471-287-7	Rotor	1
50	471-029-7	Gear Casing	1
51	471-460-7	Rotor Gear	1
52	471-480-7	First Gear Cage	1
53	471-445-7	Middle Gear	1
54	471-485-7	Second Gear Cage	1
55	471-471-7	Second Planet Gear	6
56	471-483-7	Gear Cage Spacer	1
57	972-033-0	Roller Pin (2.5 x 8)	6
58	975-178-0	Spacer (26 x 10 x 1.5)	1
59	976-472-0	Spring (Blue-Standard)	1
60	976-493-0	Spring (Red-Weak)	1
61	976-471-0	Spring (Pink-Weaker)	1
61-1	976-504-0	Spring (Black-Strong)	1
62	471-287-5	Rotor	1
63	471-029-5	Gear Casing	1
64	471-480-5	Gear Cage	1
65	471-470-5	Planet Gear	3
66	972-036-0	Roller Pin (2.5 x 15.8A)	3
67	975-009-0	Spacer (9 x 5.2 x 0.3)	1
68	975-188-0	Spacer (26 x 20 x 1.5)	1
69	976-493-0	Spring (Red-Standard)	1
70	976-471-0	Spring (Pink-Weak)	1
70-1	976-472-0	Spring (Blue-Strong)	1
71	987-013-0	Miniature Ball Bearing (R1350)	1
72	471-287-5	Rotor	1

Index Number	Part Number	Description	Qty.
73	471-029-7	Gear Casing	1
74	471-480-3	Gear Cage	1
75	471-483-3	Gear Cage Spacer	1
76	471-470-3	Planet Gear	3
77	972-033-0	Roller Pin (2.5 x 8)	3
78	976-471-0	Spring (Pink-Standard)	1
79	976-493-0	Spring (Red-Strong)	1

ACCESSORIES

80	916-710-0	(+) Double-end Bit (No.2 x 70) for LT30A	1
81	916-810-0	(+) Double-end Bit (No.2 x 70) for LT30B	1
83	939-402-0	Manual Driver No.2 (Ø5)	1

ACCESSORIES for Direct Type

84	408-088-2	Silencer Assembly	1
----	-----------	-------------------	---

ACCESSORIES for Piped-Away Type

86	934-150-0	Leader Hose Assembly	1
85	408-885-0	Exhaust Hose Assembly	1

ACCESSORIES for Slotted Head Bit & Finder

87	471-082-7	Bit Casing Set Screw	1
88	471-057-7	Bit Casing	1
89	916-020-0	(-) Bit (4 x 5) (5H)	1
90	917-299-0	Finder (4 x 51 x 15)	1
91	976-330-0	Spring (13.8 x 18 x 0.8)	1

FOOTNOTES

- = Parts for US-LT30A Series
- = Parts for US-LT30B Series
- * = Parts for US-LT30A-11 & US-LT30B-11
- ▲ = Parts for US-LT30A-17 & US-LT30B-17
- = Parts for US-LT30A-23 & US-LT30B-23



When ordering spare parts, please specify tool type, part number and description.

10000 SE PINE, PORTLAND, OR 97216
503-254-6600 FAX 503-255-2615

AIMCO also offers a complete line of standard & special adapters, bits, sockets and extensions.