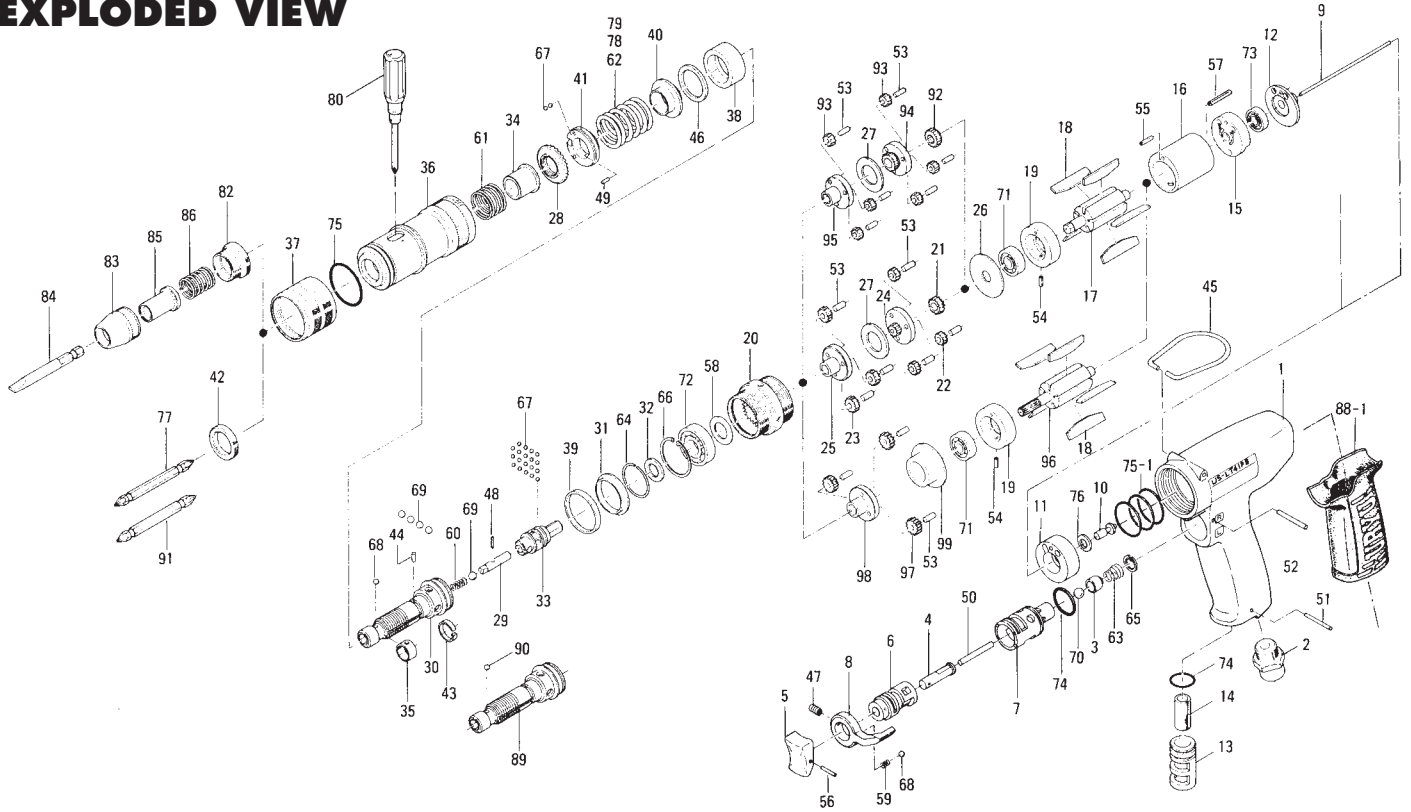


US-LT41P SERIES SCREWDRIVERS

EXPLODED VIEW



PARTS LIST — FOR REFERENCE ONLY

Index Number	Part Number	Description	Qty.
1	443-025-6	Casing	1
2	480-091-8	Air Inlet Bushing	1
3	480-100-9	Valve	1
4	443-103-5	Valve Rod Bushing	1
5	177-107-5	Valve Lever	1
6	480-210-9	Reverse Valve	1
7	480-211-9	Reverse Valve Bushing	1
8	480-212-8	Reverse Lever	1
9	443-104-5	Valve Rod	1
10	443-254-5	Shut-Off Valve	1
11	443-282-6	Handle Bushing	1
12	443-291-5	Rear Plate Spacer	1
13	480-780-8	Exhaust Stack	1
14	177-835-5	Filter	1
15	472-285-7	Rear Plate	1
16	443-286-5	Cylinder	1
18	472-288-0	Blade (PC)	5
19	472-289-7	Front Plate	1
20	463-029-8	Gear Casing	1
28	472-257-8	Regulating screw	1
29	471-318-5	Pilot Pin	1
30	472-319-7	Anvil	1
31	463-334-7	Anvil Spacer	1
32	461-344-6	Cam Retainer	1
33	472-346-5	Cam	1
34	472-351-7	Bit Sleeve	1
35	471-356-7	Bit Band	1
36	463-369-7	Clutch Casing	1
37	472-370-7	Clutch Casing Sleeve	1
38	472-375-7	Cam Ring	1
39	463-397-7	Nut Flange	1
40	472-379-8	Retainer	1
41	472-562-8	Stopper	1
42	472-567-7	Bushing	1
43	471-670-7	Band	1
44	471-764-7	Notch Pin	1
45	010-790-1	Suspension Ring	1

Index Number	Part Number	Description	Qty.
46	944-019-0	Back-up Ring (P19)	1
47	952-106-0	Allen Head Dog Point Screw (M4 x 6)	1
48	969-470-0	Pin (E) (2 x 8)	1
49	970-092-0	Pin (H) (2 x 5.5)	1
50	970-228-0	Pin (H) (3 x 28)	1
51	971-120-0	Pin (2 x 20)	1
52	971-123-0	Pin (2 x 23)	1
54	973-006-0	Roll Pin (2 x 6)	1
55	973-010-0	Roll Pin (2 x 10)	1
56	973-012-0	Roll Pin (2 x 12)	1
57	973-018-0	Roll Pin (2 x 18)	1
58	975-106-0	Spacer (18.5 x 11 x 1)	1
59	976-006-0	Spring (3 x 5) (0.4)	1
60	976-058-0	Spring (4.5 x 11) (0.4)	1
61	976-450-0	Spring (18.5 x 10) (1.0)	1
63	977-150-0	Cone Spring (6.8 x 8.5 x 8) (0.4)	1
64	978-218-0	Snap Ring (22 x 1)	1
65	979-002-0	Inner Snap Ring (9)	1
66	979-326-0	Inner Snap Ring (IRTW-26)	1
67	981-001-0	Ball (3/32)	21
68	981-002-0	Ball (1/8)	2
69	981-004-0	Ball (3/16)	5
70	981-206-0	Ball (1/4)	1
71	982-063-0	Ball Bearing (606ZZ)	1
72	982-100-0	Ball Bearing (6000)	1
73	987-039-0	Miniature Ball Bearing (R1560ZZ)	1
74	990-912-0	O-Ring (SNS-14)	2
75	990-923-0	O-Ring (SNS-26)	1
75-1	990-333-0	O-Ring (JW1530-23)	3
76	996-411-0	Packing (11 x 6 x 1)	1
88-1	174-842-8	Handle Jacket	1
17	472-287-7	Rotor	1 ■
21	472-460-7	Rotor Gear	1 ■
22	472-470-7	First Planet Gear	3 ■
23	472-471-7	Second Planet Gear	3 ■
24	472-480-7	First Gear Cage	1 ■
25	472-485-7	Second Gear Cage	1 ■

Index Number	Part Number	Description	Qty.
26	472-807-7	Spacer	1 ■
27	496-483-1	Gear Cage Spacer	1 ■
53	972-089-0	Needle Roller (3 x 8)	6 ■
62	976-515-0	Spring (22.7 x 28) (2.6)	1 ■
92	472-460-5	Rotor Gear	1 X
93	472-470-5	First Planet Gear	6 X
94	472-480-5	First Gear Cage	1 X
95	472-485-5	Second Gear Cage	1 X
27	496-483-1	Gear Cage Spacer	1 X
53	972-089-0	Needle Roller (3 x 8)	6 X
78	976-516-0	Spring (22.1 x 28) (2.3)	1 X
96	472-287-3	Rotor	1 ●
97	472-470-3	Planet Gear	3 ●
98	472-480-3	Gear Cage	1 ●
99	472-807-3	Spacer	1 ●
53	972-089-0	Needle Roller (3 x 8)	3 ●
79	976-517-0	Spring (21.5 x 31) (2.0)	1 ●
89	472-319-6	Anvil	1 ▲
90	981-003-0	Ball (5/32)	1 ▲
91	916-710-0	Double Bit No. 2 x 70 (5H)	1 ▲

ACCESSORIES

77	916-810-0	Double Bit No.2 x 75	1
80	939-402-0	Manual Driver (No.2)	1
82	472-082-7	Bit Casing Set Screw	1 □
83	471-057-7	Bit Casing	1 □
84	916-030-0	(-) Bit (5 x 56) (6.35H)	1 □
85	917-350-0	Finder (7.3 x 56 x 24)	1 □
86	976-330-0	Spring (13.8 x 18) (0.8)	1 □

FOOTNOTES

- = Parts for US-LT41PA/PB-08
- X = Parts for US-LT41PA/PB-15
- = Parts for US-LT41PA/PB-21
- ▲ = Parts for A type 5mm Hex. Anvil
- = Parts for Slotted Head Bit and Finder, in common. Take out #42 and use these parts.



AIMCO

When ordering spare parts, please specify tool type, part number and description.

10000 SE PINE, PORTLAND, OR 97216
503-254-6600 FAX 503-255-2615

AIMCO also offers a complete line of standard & special adapters, bits, sockets and extensions.