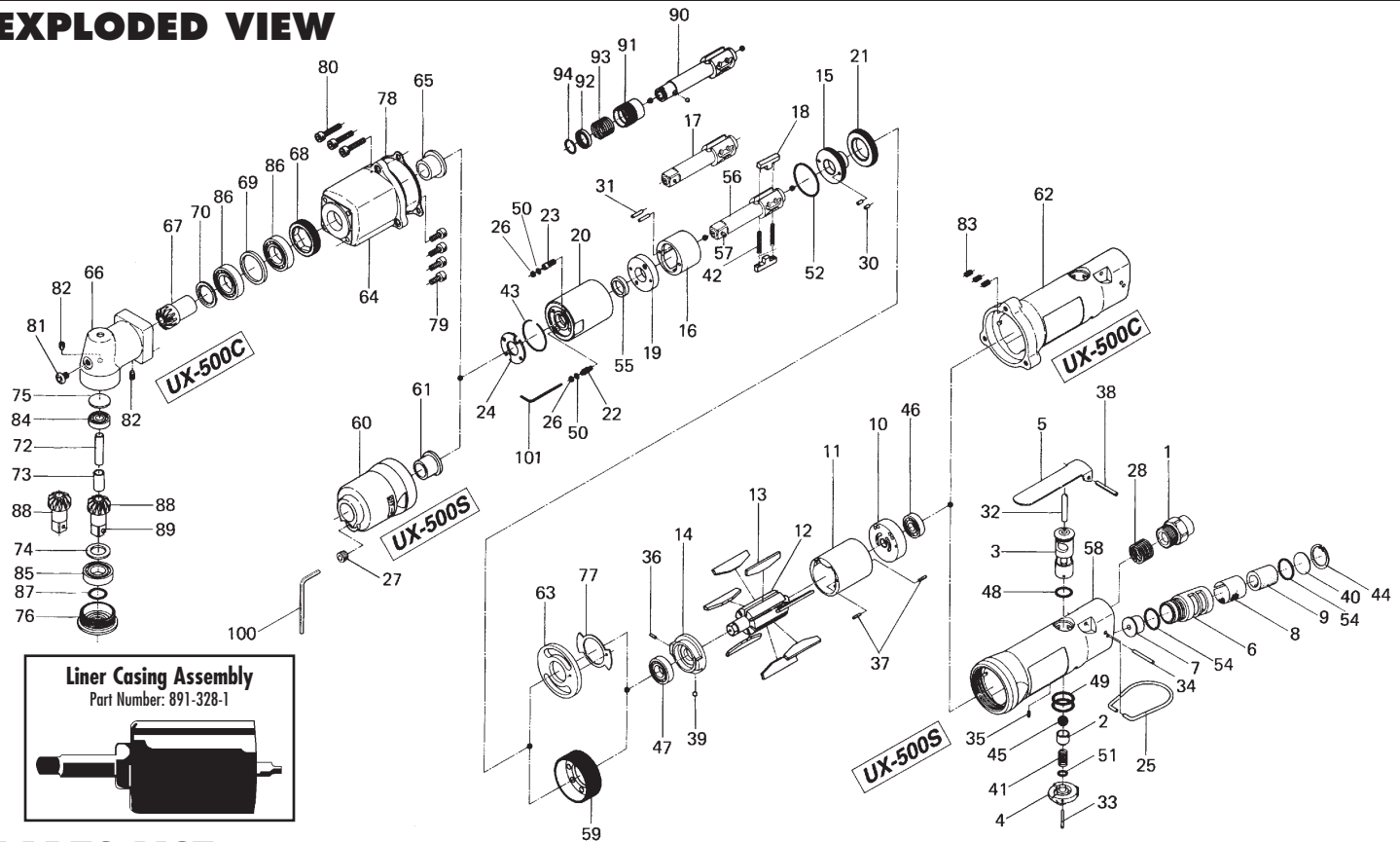


UX-500S & UX-500C OIL-PULSE TOOLS

EXPLODED VIEW



PARTS LIST — FOR REFERENCE ONLY

Index Number	Part Number	Description	Qty.	Index Number	Part Number	Description	Qty.	Index Number	Part Number	Description	Qty.
1	180-091-6	Air Inlet Bushing	1	37	973-008-0	Roll Pin (2 x 8)	2	73	008-432-1	Driven Gear Spindle Collar	1
2	180-100-2	Valve	1	38	973-124-0	Roll Pin (3 x 24)	1	74	008-433-1	Driven Gear Spacer	1
3	180-210-2	Reverse Valve	1	39	981-045-0	Ball (1.5)	1	75	179-391-5	Spindle Rear Cover	1
4	180-212-2	Reverse Lever	1	40	975-598-0	Round Plate (18 x 11)	1	76	179-488-3	Angle Head Casing Cover	1
5	500-107-1	Valve Lever	1	41	976-147-0	Spring (7 x 12 x 0.6)	1	77	179-856-3	Separator Packing	1
6	194-780-4	Exhaust Stack	1	42	976-791-0	Spring (3.3 x 21 x 0.4) WPC	2	78	179-854-3	Handle Packing	1
7	190-781-6	Exhaust Stack Bushing	1	43	978-282-0	Snap Ring (28 x 1.0)	1	79	945-010-0	Allen Head Bolt (M4 x 10)	4
8	194-042-4	Silencer	1	44	979-318-0	Inner Snap Ring (IRTW-18)	1	80	945-012-0	Allen Head Bolt (M4 x 12)	3
9	611-780-7	Filter	1	45	981-208-0	Ball (Black 5/16)	1	81	945-949-0	Hexagon Round Head Bolt (M5 x 6)	1
10	182-285-2	Rear Plate	1	46	982-401-0	Ball Bearing (EE2)	1	82	954-105-0	Allen Head Cone Point Screw (M4 x 5)	2
11	177-286-7	Cylinder	1	47	982-402-0	Ball Bearing (EE3)	1	83	965-006-0	Heli-Sert (M4 x 1.5D)	3
12	177-287-5	Rotor	1	48	990-008-0	O-Ring (P10)	1	84	982-013-0	Ball Bearing (606)	1
13	177-288-5	Blade	7	49	990-014-0	O-Ring (P14)	2	85	982-902-0	Ball Bearing (6901)	1
14	182-289-2	Front Plate	1	50	990-320-0	O-Ring (ARP-568-003)	2	86	982-903-0	Ball Bearing (6902)	2
15	196-901-4	Liner Rear Plate	1	51	990-322-0	O-Ring (ARP-568-107)	1	87	990-910-0	O-Ring (SNS12.5)	1
16	177-902-5	Liner	1	52	990-329-0	O-Ring (JWI 530-19)	1	88	891-345-1	Driven Gear (P)	1
17	177-319-5	Anvil (OP-0)	1	54	990-914-0	O-Ring (SNS-16)	2	89	891-300-1	Socket Pin Assembly	1
18	177-440-5	Driving Blade	2	55	995-512-0	Fluorocarbon Seal (AR10400-P12GC)	1	90	177-350-7	Driver Anvil	1
19	178-904-8	Liner Front Plate	1	56	891-307-1	Anvil (OP-P)	1	91	011-351-1	Bit Sleeve	1
20	177-905-6	Liner Casing	1	57	891-300-1	Socket Pin Assembly	1	92	011-352-1	Bit Spacer	1
21	190-906-6	Liner Casing Setter	1	58	177-025-7	Casing	1	93	976-327-0	Spring (13.5 x 11 x 0.9)	1
22	174-907-8	Relief Valve Spindle	1	59	177-036-5	Hammer Casing Connector	1	94	978-117-0	Snap Ring (11.7 x 1.0)	1
23	178-742-0	Oil Plug	1	60	177-439-5	Front Casing	1	95	981-002-0	Ball (1/8)	1
24	178-327-9	Anvil Front Spacer	1	61	190-328-6	Anvil Bushing	1				
25	010-790-1	Suspension Ring	1	62	177-025-9	Casing	1				
26	944-002-0	Supporting Ring (2.6 x 4.5 x 1)	2	63	177-027-9	Separator	1				
27	966-110-0	Allen Head Plug (NPT1/6)	1	64	177-439-9	Front Casing	1				
28	965-073-0	Heli-Sert (UNF5/8 x N6)	2	65	185-328-2	Anvil Bushing	1				
30	970-130-0	Pin (H) (2.45 x 4.5)	2	66	179-441-3	Angle Head Casing	1				
31	970-135-0	Pin (H) (2.45 x 11)	2	67	179-420-3	Driving Gear	1				
32	970-326-0	Pin (H) (4 x 25)	1	68	179-422-3	Driving Gear Bushing Screw	1				
33	973-022-0	Pin (2 x 22)	1	69	179-423-3	Driving Gear Bushing Spacer	1				
34	971-163-0	Pin (2.5 x 23)	1	70	179-425-3	Driving Gear Spacer	1				
35	973-005-0	Roll Pin (2 x 5)	1	71	008-430-1	Driven Gear (0)	1				
36	973-006-0	Roll Pin (2 x 6)	1	72	008-431-1	Driven Gear Spindle	1				

ACCESSORIES

100	939-105-0	Allen Wrench (4)	1
101	939-091-0	Allen Wrench (1.5)	1

FOOTNOTES

- = Parts for UX-500S
- = Parts for UX-500C
- ◆ = Parts for DRIVER TYPE

AIMCO also offers a complete line of standard & special adapters, bits, sockets and extensions.



When ordering spare parts, please specify tool type, part number and description.

10000 SE PINE, PORTLAND, OR 97216
503-254-6600 FAX 503-255-2615